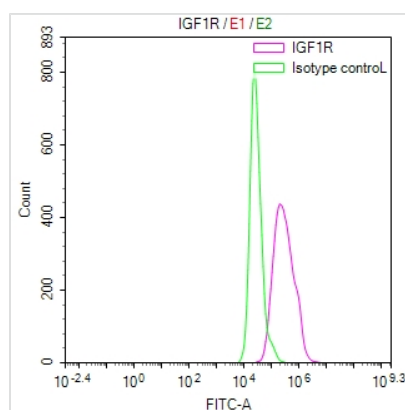




IGF1R Recombinant Monoclonal Antibody

| | |
|----------------------------|--|
| Product Code | CSB-RA011087MA1HU |
| Storage | Upon receipt, store at -20°C or -80°C. Avoid repeated freeze. |
| Uniprot No. | P08069 |
| Immunogen | Recombinant Human IGF1R protein |
| Species Reactivity | Human |
| Tested Applications | ELISA, FC; Recommended dilution: FC:1:20-1:500 |
| Form | Liquid |
| Conjugate | Non-conjugated |
| Storage Buffer | Preservative: 0.03% Proclin 300 Constituents: 50% Glycerol, 0.01M PBS, PH 7.4 |
| Purification Method | Affinity-chromatography |
| Isotype | Mouse IgG |
| Clonality | Monoclonal |
| Product Type | Recombinant Antibody |
| Immunogen Species | Homo sapiens (Human) |
| Research Area | Cancer;Developmental biology;Signal transduction |
| Gene Names | IGF1R |
| Clone No. | 6H2 |

Image



Overlay Peak curve showing HeLa cells surface stained with CSB-RA011087MA1HU (red line) at 1:50. Then 10% normal goat serum was incubated to block non-specific protein-protein interactions followed by the antibody (1µg/1*10⁶cells) for 45 min at 4°C. The secondary antibody used was FITC-conjugated Goat Anti-Mouse IgG(H+L) at 1/200 dilution for 35 min at 4°C. Isotype control antibody (green line) was mouse IgG1 (1µg/1*10⁶cells) used under the same conditions. Acquisition of >10,008 events was performed.