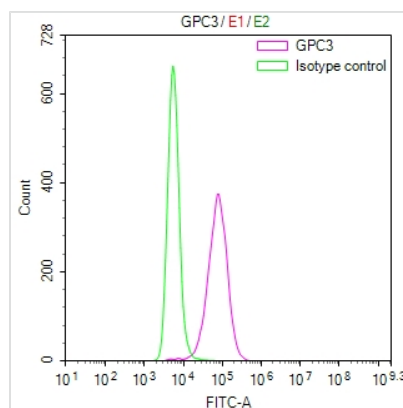




# GPC3 Recombinant Monoclonal Antibody

<b>Product Code</b>	CSB-RA009705MA1HU
<b>Storage</b>	Upon receipt, store at -20°C or -80°C. Avoid repeated freeze.
<b>Uniprot No.</b>	P51654
<b>Immunogen</b>	Recombinant Human GPC3 protein
<b>Species Reactivity</b>	Human
<b>Tested Applications</b>	ELISA, FC; Recommended dilution: FC:1:20-1:500
<b>Form</b>	Liquid
<b>Conjugate</b>	Non-conjugated
<b>Storage Buffer</b>	Preservative: 0.03% Proclin 300 Constituents: 50% Glycerol, 0.01M PBS, PH 7.4
<b>Purification Method</b>	Affinity-chromatography
<b>Isotype</b>	Mouse IgG
<b>Clonality</b>	Monoclonal
<b>Product Type</b>	Recombinant Antibody
<b>Immunogen Species</b>	Homo sapiens (Human)
<b>Research Area</b>	Cancer;Developmental biology;Signal transduction?Stem cells
<b>Gene Names</b>	GPC3
<b>Clone No.</b>	8D11

## Image



Overlay Peak curve showing THP-1 cells surface stained with CSB-RA009705MA1HU (red line) at 1:100. Then 10% normal goat serum was Incubated to block non-specific protein-protein interactions followed by the antibody (1µg/1\*10<sup>6</sup>cells) for 45 min at 4°C. The secondary antibody used was FITC-conjugated Goat Anti-Mouse IgG(H+L) at 1/200 dilution for 35 min at 4°C. Isotype control antibody (green line) was mouse IgG1 (1µg/1\*10<sup>6</sup>cells) used under the same conditions. Acquisition of >10, 010 events was performed.