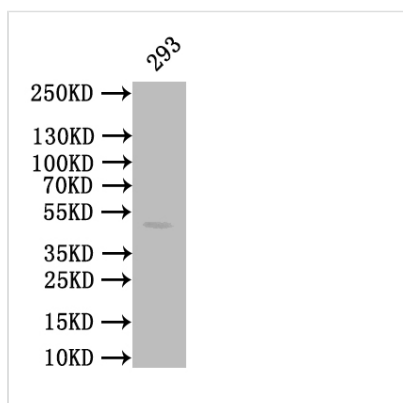




CALR Recombinant Monoclonal Antibody

Product Code	CSB-RA004458MA1HU
Storage	Upon receipt, store at -20°C or -80°C. Avoid repeated freeze.
Uniprot No.	P27797
Immunogen	Recombinant Human CALR protein
Species Reactivity	Human, Mouse
Tested Applications	ELISA, WB, IHC, IF, FC; Recommended dilution: WB:1:1000-1:5000, IHC:1:20-1:200, IF:1:20-1:200, FC:1:20-1:200
Form	Liquid
Conjugate	Non-conjugated
Storage Buffer	Preservative: 0.03% Proclin 300 Constituents: 50% Glycerol, 0.01M PBS, PH 7.4
Purification Method	Affinity-chromatography
Isotype	Mouse IgG
Clonality	Monoclonal
Product Type	Recombinant Antibody
Immunogen Species	Homo sapiens (Human)
Research Area	Tags & Cell Markers
Target Names	CALR
Clone No.	2E2

Image



Western Blot

Positive WB detected in: 293 whole cell lysate

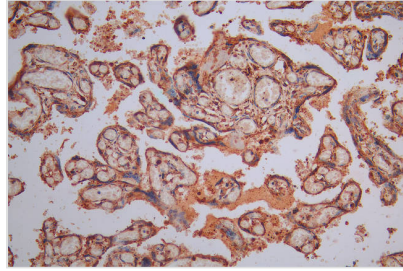
All lanes: CALR antibody at 1:1000

Secondary

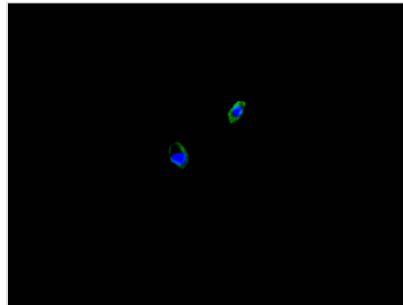
Goat polyclonal to mouse IgG at 1/50000 dilution

Predicted band size: 49 kDa

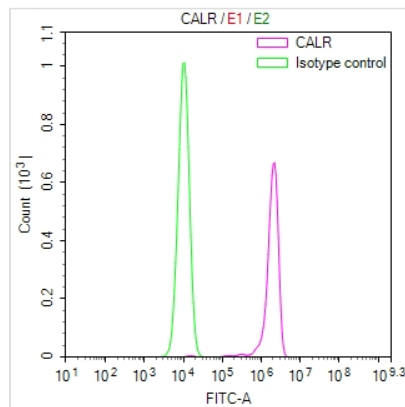
Observed band size: 49 kDa



IHC image of CSB-RA004458MA1HU diluted at 1:300 and staining in paraffin-embedded human placenta tissue performed on a Leica Bond™ system. After dewaxing and hydration, antigen retrieval was mediated by high pressure in a citrate buffer (pH 6.0). Section was blocked with 10% normal goat serum 30min at RT. Then primary antibody (1% BSA) was incubated at 4°C overnight. The primary is detected by a Goat anti-Mouse IgG labeled by HRP and visualized using 0.05% DAB.



Immunofluorescence staining of HepG2 cell with CSB-RA004458MA1HU at 1:250, counter-stained with DAPI. The cells were fixed in 4% formaldehyde and blocked in 10% normal Goat Serum. The cells were then incubated with the antibody overnight at 4°C. The secondary antibody was FITC-conjugated AffiniPure Goat Anti-Mouse IgG(H+L).



Overlay Peak curve showing JK cells stained with CSB-RA004458MA1HU (red line) at 1:300. The cells were fixed in 4% formaldehyde (15min) and permeated by 0.2% TritonX-100 for 10min. Then 10% normal goat serum to block non-specific protein-protein interactions followed by the antibody (1 μ g/1*10⁶cells) for 45min at 4°C. The secondary antibody used was FITC-conjugated Goat Anti-Mouse IgG(H+L) at 1/200 dilution for 35 min at 4°C. Isotype control antibody (green line) was mouse IgG1 (1 μ g/1*10⁶cells) used under the same conditions. Acquisition of >10,018 events was performed.

Usage

For Research Use Only. Not for use in diagnostic or therapeutic procedures.