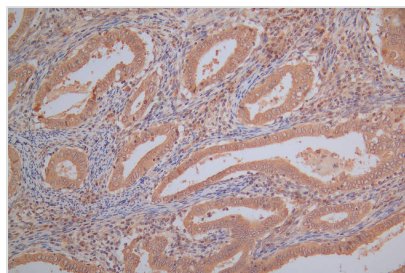




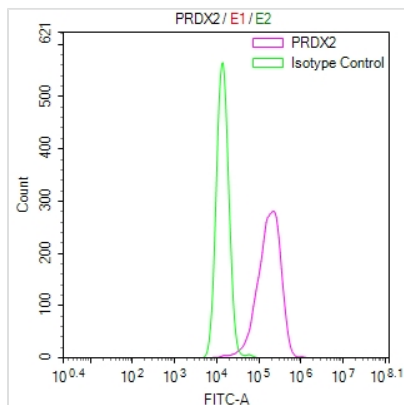
PRDX2 Recombinant Monoclonal Antibody

Product Code	CSB-RA339235MA1HU
Storage	Upon receipt, store at -20°C or -80°C. Avoid repeated freeze.
Uniprot No.	P32119
Immunogen	Recombinant Human PRDX2 protein
Species Reactivity	Human
Tested Applications	ELISA, IHC, FC; Recommended dilution: IHC:1:20-1:200, FC:1:20-1:200
Form	Liquid
Conjugate	Non-conjugated
Storage Buffer	Preservative: 0.03% Proclin 300 Constituents: 50% Glycerol, 0.01M PBS, PH 7.4
Purification Method	Affinity-chromatography
Isotype	Mouse IgG
Clonality	Monoclonal
Product Type	Recombinant Antibody
Immunogen Species	Homo sapiens (Human)
Research Area	Neuroscience?Cancer;Cell biology;Metabolism
Target Names	PRDX2
Clone No.	4E8

Image



IHC image of CSB-RA339235MA1HU diluted at 1:130 and staining in paraffin-embedded human endometrial cancer performed on a Leica BondTM system. After dewaxing and hydration, antigen retrieval was mediated by high pressure in a citrate buffer (pH 6.0). Section was blocked with 10% normal goat serum 30min at RT. Then primary antibody (1% BSA) was incubated at 4°C overnight. The primary is detected by a Goat anti-Mouse IgG labeled by HRP and visualized using 0.05% DAB.



Overlay Peak curve showing HeLa cells stained with CSB-RA339235MA1HU (red line) at 1:200. The cells were fixed in 4% formaldehyde (15min) and permeated by 0.2% TritonX-100 for 10min. Then 10% normal goat serum was incubated to block non-specific protein-protein interactions followed by the antibody (1µg/1*10⁶cells) for 45 min at 4°C. The secondary antibody used was FITC-conjugated Goat Anti-Mouse IgG(H+L) at 1/200 dilution for 35 min at 4°C. Isotype control antibody (green line) was mouse IgG1 (1µg/1*10⁶cells) used under the same conditions. Acquisition of >10,020 events was performed.

Usage

For Research Use Only. Not for use in diagnostic or therapeutic procedures.