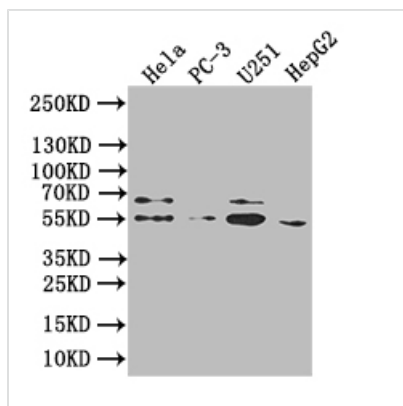




# GIPR Recombinant Monoclonal Antibody

<b>Product Code</b>	CSB-RA009438MA2HU
<b>Storage</b>	Upon receipt, store at -20°C or -80°C. Avoid repeated freeze.
<b>Uniprot No.</b>	P48546
<b>Immunogen</b>	Recombinant Human GIPR protein
<b>Species Reactivity</b>	Human
<b>Tested Applications</b>	ELISA, WB; Recommended dilution: WB:1:500-1:5000
<b>Form</b>	Liquid
<b>Conjugate</b>	Non-conjugated
<b>Storage Buffer</b>	Preservative: 0.03% Proclin 300 Constituents: 50% Glycerol, 0.01M PBS, PH 7.4
<b>Purification Method</b>	Affinity-chromatography
<b>Isotype</b>	Human IgG
<b>Clonality</b>	Monoclonal
<b>Product Type</b>	Recombinant Antibody
<b>Immunogen Species</b>	Homo sapiens (Human)
<b>Research Area</b>	Signal
<b>Target Names</b>	GIPR
<b>Clone No.</b>	32C2

## Image



### Western Blot

Positive WB detected in: HeLa whole cell lysate, PC-3 whole cell lysate, U251 whole cell lysate, HepG2 whole cell lysate

All lanes: GIPR antibody at 1:1000

Secondary

Goat polyclonal to human IgG at 1/50000 dilution

Predicted band size: 54 kDa, 49 kDa, 50 kDa

Observed band size: 54 kDa

## Usage

For Research Use Only. Not for use in diagnostic or therapeutic procedures.