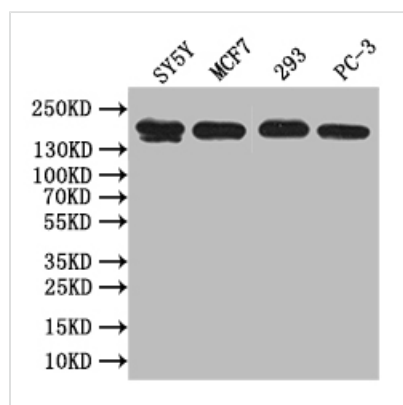




# ABCA3 Antibody

<b>Product Code</b>	CSB-PA827811
<b>Storage</b>	Upon receipt, store at -20°C or -80°C. Avoid repeated freeze.
<b>Uniprot No.</b>	Q99758
<b>Immunogen</b>	Synthetic peptide of human ABCA3
<b>Raised In</b>	Rabbit
<b>Species Reactivity</b>	Human
<b>Tested Applications</b>	ELISA, WB, IF; Recommended dilution: WB:1:1000-1:5000, IF:1:20-1:200
<b>Form</b>	Liquid
<b>Conjugate</b>	Non-conjugated
<b>Storage Buffer</b>	Liquid in PBS containing 50% glycerol, 0.5% BSA and 0.02% sodium azide.
<b>Purification Method</b>	The antibody was affinity-purified from rabbit antiserum by affinity-chromatography using epitope-specific immunogen.
<b>Isotype</b>	IgG
<b>Clonality</b>	Polyclonal
<b>Product Type</b>	Polyclonal Antibody
<b>Immunogen Species</b>	Homo sapiens (Human)
<b>Target Names</b>	ABCA3

## Image



### Western Blot

Positive WB detected in: SY5Y whole cell lysate, MCF7 whole cell lysate, 293 whole cell lysate, PC-3 whole cell lysate

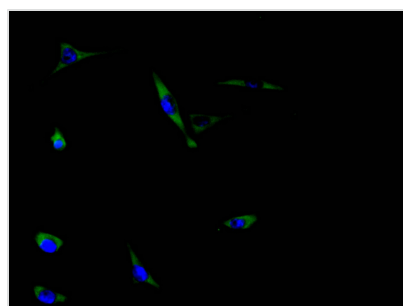
All lanes: ABCA3 antibody at 1:1000

### Secondary

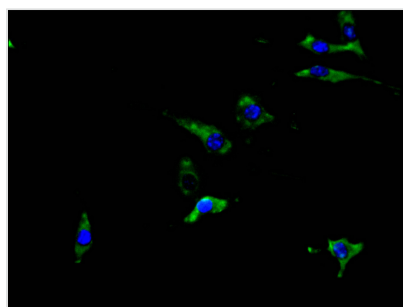
Goat polyclonal to rabbit IgG at 1/50000 dilution

Predicted band size: 192 kDa

Observed band size: 192 kDa



Immunofluorescence staining of MCF-7 cell with CSB-PA827811 at 1:30, counter-stained with DAPI. The cells were fixed in 4% formaldehyde and blocked in 10% normal Goat Serum. The cells were then incubated with the antibody overnight at 4C. The secondary antibody was Alexa Fluor 488-conjugated AffiniPure Goat Anti-Rabbit IgG(H+L).



Immunofluorescence staining of SH-SY5Y cell with CSB-PA827811 at 1:30, counter-stained with DAPI. The cells were fixed in 4% formaldehyde and blocked in 10% normal Goat Serum. The cells were then incubated with the antibody overnight at 4C. The secondary antibody was Alexa Fluor 488-conjugated AffiniPure Goat Anti-Rabbit IgG(H+L).

## Usage

For Research Use Only. Not for use in diagnostic or therapeutic procedures.