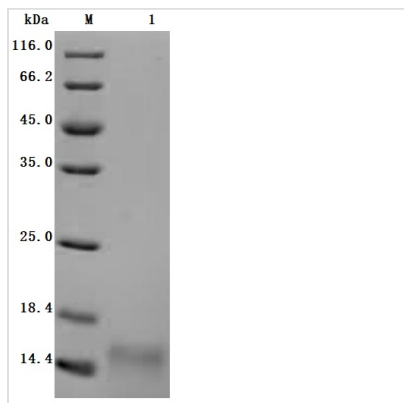




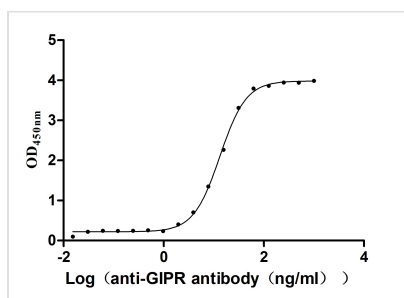
Recombinant *Macaca fascicularis* Gastric inhibitory polypeptide receptor (GIPR), partial (Active)

Product Code	CSB-YP4825MOV
Abbreviation	Recombinant Cynomolgus monkey GIPR protein, partial (Active)
Storage	The shelf life is related to many factors, storage state, buffer ingredients, storage temperature and the stability of the protein itself. Generally, the shelf life of liquid form is 6 months at -20°C/-80°C. The shelf life of lyophilized form is 12 months at -20°C/-80°C.
Uniprot No.	A0A2K5VD75
Form	Lyophilized powder
Storage Buffer	Lyophilized from a 0.2 μm filtered 20 mM Tris-HCl, 0.5 M NaCl, 250mM Imidazole 6% Trehalose, pH 8.0
Product Type	Recombinant Protein
Immunogen Species	<i>Macaca fascicularis</i> (Crab-eating macaque) (Cynomolgus monkey)
Biological Activity	Measured by its binding ability in a functional ELISA. Immobilized <i>Macaca fascicularis</i> GIPR at 2 μg/mL can bind Anti-GIPR recombinant antibody (CSB-RA009438MA1HU). The EC50 is 12.66-13.86 ng/mL.
Purity	Greater than 95% as determined by SDS-PAGE.
Sequence	GSEGQTAGELYQRWERYRRECQETLATAEPPSGLACNGSFDMYVCWNYAA PNATARASCPWYLPWHHHVAAGFVLRQCGSDGQWGLWRDHTQCENPEKNE AFLDQRLILERLQ
Source	yeast
Target Names	GIPR
Expression Region	26-138aa
Notes	Repeated freezing and thawing is not recommended. Store working aliquots at 4°C for up to one week.
Tag Info	N-terminal 6xHis-tagged
Mol. Weight	14.5 kDa
Protein Length	Partial

Image



(Tris-Glycine gel) Discontinuous SDS-PAGE (reduced) with 5% enrichment gel and 15% separation gel.



Activity
 Measured by its binding ability in a functional ELISA. Immobilized *Macaca fascicularis* GIPR at 2 μ g/mL can bind Anti-GIPR recombinant antibody (CSB-RA009438MA1HU)?the EC₅₀ is 12.66-13.86 ng/mL.

Endotoxin

Less than 1.0 EU/ μ g as determined by LAL method.

Reconstitution

We recommend that this vial be briefly centrifuged prior to opening to bring the contents to the bottom. Please reconstitute protein in deionized sterile water to a concentration of 0.1-1.0 mg/mL. We recommend to add 5-50% of glycerol (final concentration) and aliquot for long-term storage at -20°C/-80°C. Our default final concentration of glycerol is 50%. Customers could use it as reference.

Shelf Life

The shelf life is related to many factors, storage state, buffer ingredients, storage temperature and the stability of the protein itself. Generally, the shelf life of liquid form is 6 months at -20°C/-80°C. The shelf life of lyophilized form is 12 months at -20°C/-80°C.