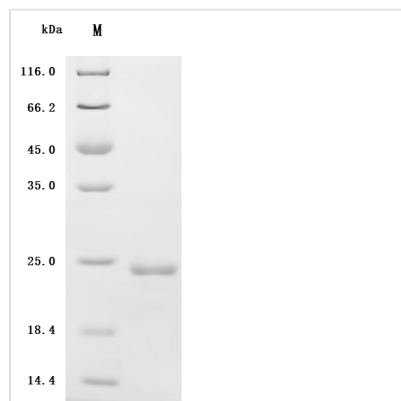




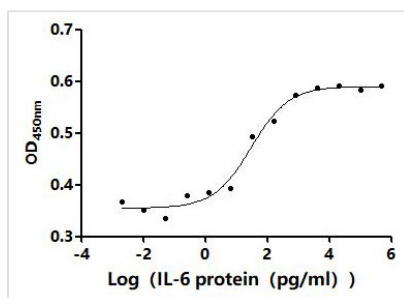
# Recombinant Human Interleukin-6 (IL6) (Active)

<b>Product Code</b>	CSB-YP011664HU
<b>Abbreviation</b>	Recombinant Human IL6 protein (Active)
<b>Storage</b>	The shelf life is related to many factors, storage state, buffer ingredients, storage temperature and the stability of the protein itself. Generally, the shelf life of liquid form is 6 months at -20°C/-80°C. The shelf life of lyophilized form is 12 months at -20°C/-80°C.
<b>Uniprot No.</b>	P05231
<b>Form</b>	Lyophilized powder
<b>Storage Buffer</b>	Lyophilized from a 0.2 μm filtered PBS, 6% Trehalose, pH 7.4
<b>Product Type</b>	Recombinant Protein
<b>Immunogen Species</b>	Homo sapiens (Human)
<b>Biological Activity</b>	The ED50 as determined by the dose-dependent stimulation of the proliferation of human TF-1 cells is 58 - 295 pg/mL.
<b>Purity</b>	≥ 95% as determined by SDS-PAGE.
<b>Sequence</b>	VPPGEDSKDVAAPHRQPLTSSERIDKQIRYILDGISALRKETCNKSNMCESSKE ALAENNLNLPKMAEKDGCQSGFNEETCLVKIITGLLEFEVYLEYLQNRFESSE EQARAVQMSTKVLIQFLQKKAKNLDAITTPDPTTNASLLTKLQAQNQWLQDMT THLILRSFKEFLQSSLRALRQM
<b>Source</b>	Yeast
<b>Target Names</b>	IL6
<b>Expression Region</b>	30-212aa
<b>Notes</b>	Repeated freezing and thawing is not recommended. Store working aliquots at 4°C for up to one week.
<b>Tag Info</b>	N-terminal 6xHis-tagged
<b>Mol. Weight</b>	22.8 kDa
<b>Protein Length</b>	Full Length of Mature Protein

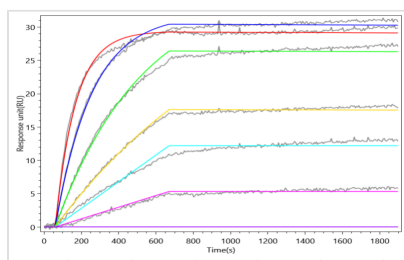
## Image



(Tris-Glycine gel) Discontinuous SDS-PAGE (reduced) with 5% enrichment gel and 15% separation gel.


**Activity**

The ED<sub>50</sub> as determined by the dose-dependent stimulation of the proliferation of human TF-1 cells is 58 - 295 pg/mL.



IL6 (Siltuximab) Recombinant Monoclonal Antibody (CSB-RA011664MA1HU) captured on Protein A Chip can bind Recombinant Human IL-6 protein with an affinity constant of 0.135 nM as detected by MetaSPR Assay (WeSPRTM 200).

**Endotoxin**

Less than 1.0 EU/ug as determined by LAL method.

**Reconstitution**

We recommend that this vial be briefly centrifuged prior to opening to bring the contents to the bottom. Please reconstitute protein in deionized sterile water to a concentration of 0.1-1.0 mg/mL. We recommend to add 5-50% of glycerol (final concentration) and aliquot for long-term storage at -20°C/-80°C. Our default final concentration of glycerol is 50%. Customers could use it as reference.

**Shelf Life**

The shelf life is related to many factors, storage state, buffer ingredients, storage temperature and the stability of the protein itself.

Generally, the shelf life of liquid form is 6 months at -20°C/-80°C. The shelf life of lyophilized form is 12 months at -20°C/-80°C.