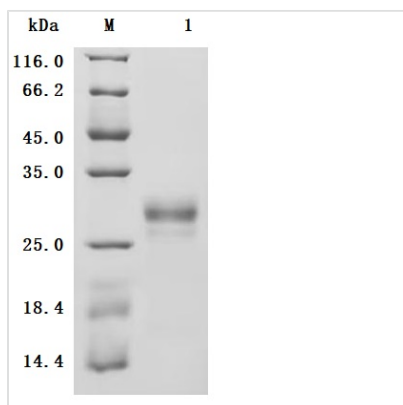


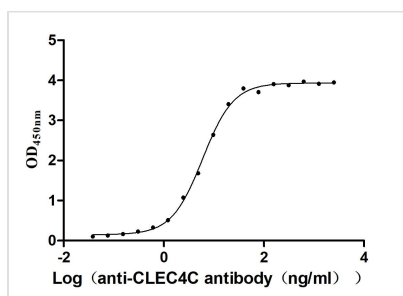


Recombinant *Macaca fascicularis* C-type lectin domain family 4 member C (CLEC4C), partial (Active)

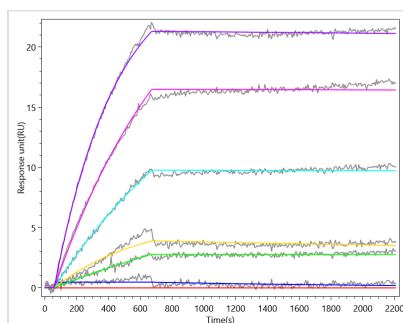
Product Code	CSB-MP4819MOV
Abbreviation	Recombinant Cynomolgus monkey CLEC4C protein, partial (Active)
Storage	The shelf life is related to many factors, storage state, buffer ingredients, storage temperature and the stability of the protein itself. Generally, the shelf life of liquid form is 6 months at -20°C/-80°C. The shelf life of lyophilized form is 12 months at -20°C/-80°C.
Uniprot No.	A0A2K5UWP4
Form	Lyophilized powder
Storage Buffer	Lyophilized from a 0.2 µm filtered PBS, 6% Trehalose, pH 7.4
Product Type	Recombinant Protein
Immunogen Species	<i>Macaca fascicularis</i> (Crab-eating macaque) (Cynomolgus monkey)
Biological Activity	Measured by its binding ability in a functional ELISA. Immobilized Cynomolgus CLEC4C at 2 µg/mL can bind Anti-CLEC4C recombinant antibody (CSB-RA855470MA1HU). The EC50 is 5.506-6.472 ng/mL.
Purity	Greater than 95% as determined by SDS-PAGE.
Sequence	YSKTVKRLSKLQEQYYPSLTCVMEGKDMEDWSCCPTPWTSFQSSCYFIST VMQSWTKSQNNCSVMGADLVVINTKEEQDFITQNLKINSAYFLGLSDPKGWR HWQWVDQTPYNKNVTFWHSGEPNSPDERCAIINFRSEEWGWNDVHCHVPQ KSICKMKKIYI
Source	Mammalian cell
Target Names	CLEC4C
Expression Region	48-212aa
Notes	Repeated freezing and thawing is not recommended. Store working aliquots at 4°C for up to one week.
Tag Info	N-terminal 6xHis-Myc-tagged
Mol. Weight	23.6 kDa
Protein Length	Partial
Image	



(Tris-Glycine gel) Discontinuous SDS-PAGE (reduced) with 5% enrichment gel and 15% separation gel.



Activity
 Measured by its binding ability in a functional ELISA. Immobilized Cynomolgus CLEC4C at 2 μ g/mL can bind Anti-CLEC4C recombinant antibody (CSB-RA855470MA1HU) the EC_{50} is 5.506-6.472 ng/mL.



CLEC4C Recombinant Monoclonal Antibody (CSB-RA855470MA1HU) captured on Protein A Chip can bind Recombinant Human CLEC4C protein with an affinity constant of 84.8 pM as detected by MetaSPR Assay (WeSPRTM 200).

Endotoxin

Less than 1.0 EU/ μ g as determined by LAL method.

Reconstitution

We recommend that this vial be briefly centrifuged prior to opening to bring the contents to the bottom. Please reconstitute protein in deionized sterile water to a concentration of 0.1-1.0 mg/mL. We recommend to add 5-50% of glycerol (final concentration) and aliquot for long-term storage at -20°C/-80°C. Our default final concentration of glycerol is 50%. Customers could use it as reference.

Shelf Life

The shelf life is related to many factors, storage state, buffer ingredients, storage temperature and the stability of the protein itself. Generally, the shelf life of liquid form is 6 months at -20°C/-80°C. The shelf life of lyophilized form is 12 months at -20°C/-80°C.