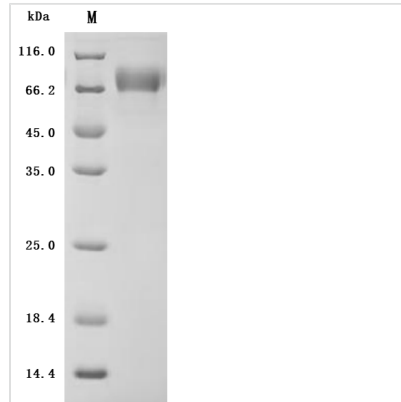


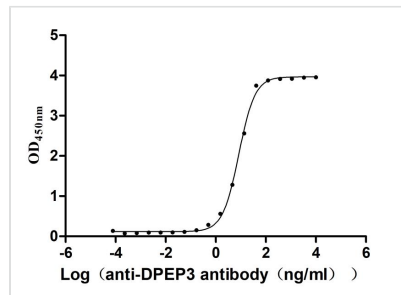


Recombinant *Macaca fascicularis* Dipeptidase 3(DPEP3) (Active)

Product Code	CSB-MP007125MOV
Abbreviation	Recombinant <i>Cynomolgus</i> monkey DPEP3 protein (Active)
Storage	The shelf life is related to many factors, storage state, buffer ingredients, storage temperature and the stability of the protein itself. Generally, the shelf life of liquid form is 6 months at -20°C/-80°C. The shelf life of lyophilized form is 12 months at -20°C/-80°C.
Uniprot No.	Q4R7M2
Form	Lyophilized powder
Storage Buffer	Lyophilized from a 0.2 µm filtered PBS, 6% Trehalose, pH 7.4
Product Type	Recombinant Protein
Immunogen Species	<i>Macaca fascicularis</i> (Crab-eating macaque) (<i>Cynomolgus</i> monkey)
Biological Activity	Measured by its binding ability in a functional ELISA. Immobilized <i>Macaca fascicularis</i> DPEP3 at 2 µg/mL can bind Anti-DPEP3 recombinant antibody (CSB-RA007125MA1HU). The EC50 is 7.817-8.936 ng/mL.
Purity	Greater than 95% as determined by SDS-PAGE.
Sequence	GETTTGAPRALSTLGFSPFTTPGVPSTLTTTPGLTTPGTTKTLDLRSRAQALMR DFPLVDGHNLDLPQVLRQRYKNVLQDVNLRNFSHSQTSLDRLRDGLVGAQFW SASVSCQTQDQTAVRLALEQIDLIRRMCASYSELELVTSAEGLNSSQKLAFLIG VEGGHSLDSSLSVLRSFYVLGVRYLTLTFTCNTPWAESSTKFTHHMYTNVSGL TSFGKVVVEELNRLGMMIDLSYASDTLMRRVLEVS RAPVIFSHSAARAVCDNS LNVPDDILQLLKNKGIVMVTLSMGVLQCNLLANVSTVADHFDHIRAVIGSEFIG IGGNYDGAGRFPQGLEDVSTYPVLIIEELLSRSWSEKELQGVLRGNLLRVFRQA EKVREESRAQSPMEAEFPYQQLSTSCHSHLVPQNGHQATHLEVTKWPTNRV PWRS
Source	Mammalian cell
Target Names	DPEP3
Expression Region	36-463aa
Notes	Repeated freezing and thawing is not recommended. Store working aliquots at 4°C for up to one week.
Tag Info	C-terminal 10xHis-tagged
Mol. Weight	48.5 kDa
Protein Length	Full Length of Mature Protein
Image	



(Tris-Glycine gel) Discontinuous SDS-PAGE (reduced) with 5% enrichment gel and 15% separation gel.



Activity
 Measured by its binding ability in a functional ELISA. Immobilized *Macaca fascicularis* DPEP3 at 2 µg/ml can bind Anti-DPEP3 recombinant antibody (CSB-RA007125MA1HU). The EC_{50} is 7.817-8.936 ng/mL.

Endotoxin

Less than 1.0 EU/ug as determined by LAL method.

Reconstitution

We recommend that this vial be briefly centrifuged prior to opening to bring the contents to the bottom. Please reconstitute protein in deionized sterile water to a concentration of 0.1-1.0 mg/mL. We recommend to add 5-50% of glycerol (final concentration) and aliquot for long-term storage at -20°C/-80°C. Our default final concentration of glycerol is 50%. Customers could use it as reference.

Shelf Life

The shelf life is related to many factors, storage state, buffer ingredients, storage temperature and the stability of the protein itself.

Generally, the shelf life of liquid form is 6 months at -20°C/-80°C. The shelf life of lyophilized form is 12 months at -20°C/-80°C.