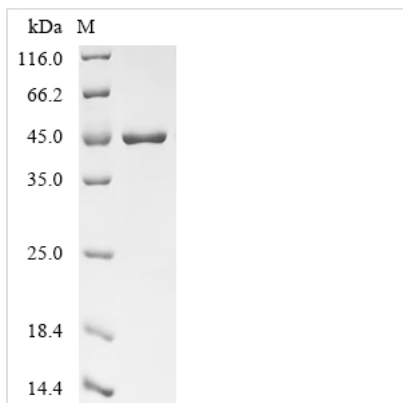




Recombinant Human Histone-lysine N-methyltransferase SETDB1 (SETDB1)

Product Code	CSB-EP619960HUe1
Abbreviation	Recombinant Human SETDB1 protein
Storage	The shelf life is related to many factors, storage state, buffer ingredients, storage temperature and the stability of the protein itself. Generally, the shelf life of liquid form is 6 months at -20°C/-80°C. The shelf life of lyophilized form is 12 months at -20°C/-80°C.
Uniprot No.	Q15047
Form	Liquid or Lyophilized powder
Storage Buffer	If the delivery form is liquid, the default storage buffer is Tris/PBS-based buffer, 5%-50% glycerol. If the delivery form is lyophilized powder, the buffer before lyophilization is Tris/PBS-based buffer, 6% Trehalose.
Product Type	Recombinant Human Histone-lysine N-methyltransferase SETDB1 (SETDB1)
Immunogen Species	Homo sapiens (Human)
Sensitivity	Not Test
Purity	≥ 85% as determined by SDS-PAGE.
Sequence	MSSLPGCIGLDAATATVESEEIAELQQAVVEELGISMEE LRHFIDEELEK MDCV QQRKKQLAELETWVIQKESEVAHV DQLFDDASRAVTNCE SLVKDFY SKLGLQ YRDSSEDESSRPTEIIEIPDEDDDDVLSIDSGDAGS RTPKDQKLREAMAALRKS AQDVQKFMDAVNKKSSSQDLHKG TLSQMSGELSKDGD LIVSMRILGKKR TKT WHKGTLIAIQTVGPGK KYKVKFDNKGK SLLSGNHIA YDYHPPADKLYV GSRVV AKYK DGNQVWLYAGIVAETPNVKNL RFLIFFDDGYASYVTQSELYPICRPLKK TWEDIEDISCRDFIEEYVTAYPNRPMVLLKSGQLIKTEWEGTWWKSRVEEVDG SLVRILFLVLFSTILEAEVGGGGT
Research Area	Epigenetics and Nuclear Signaling
Source	E.coli
Target Names	SETDB1
Expression Region	1-397aa
Notes	Repeated freezing and thawing is not recommended. Store working aliquots at 4°C for up to one week.
Tag Info	Tag-Free
Mol. Weight	44.8 kDa
Protein Length	Full Length of Isoform 2
Image	



(Tris-Glycine gel) Discontinuous SDS-PAGE (reduced) with 5% enrichment gel and 15% separation gel.

Reconstitution

We recommend that this vial be briefly centrifuged prior to opening to bring the contents to the bottom. Please reconstitute protein in deionized sterile water to a concentration of 0.1-1.0 mg/mL. We recommend to add 5-50% of glycerol (final concentration) and aliquot for long-term storage at -20°C/-80°C. Our default final concentration of glycerol is 50%. Customers could use it as reference.

Shelf Life

The shelf life is related to many factors, storage state, buffer ingredients, storage temperature and the stability of the protein itself. Generally, the shelf life of liquid form is 6 months at -20°C/-80°C. The shelf life of lyophilized form is 12 months at -20°C/-80°C.