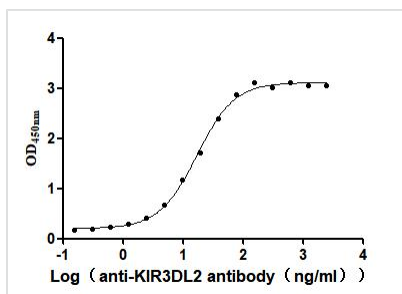




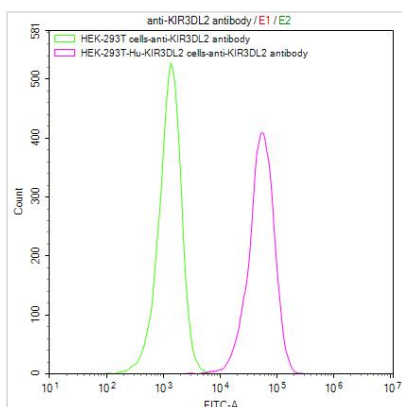
KIR3DL2 Recombinant Monoclonal Antibody

Product Code	CSB-RA012365MA1HU
Storage	Upon receipt, store at -20°C or -80°C. Avoid repeated freeze.
Uniprot No.	P43630
Immunogen	Recombinant Human KIR3DL2 protein
Species Reactivity	Human
Tested Applications	ELISA, FC; Recommended dilution: FC:1:20-1:200
Form	Liquid
Conjugate	Non-conjugated
Storage Buffer	Preservative: 0.03% Proclin 300 Constituents: 50% Glycerol, 0.01M PBS, PH 7.4
Purification Method	Affinity-chromatography
Isotype	hIgG1
Clonality	Monoclonal
Product Type	Recombinant Antibody
Immunogen Species	Homo sapiens (Human)
Research Area	Immunology
Target Names	KIR3DL2
Clone No.	8D10

Image



The Binding Activity of Human KIR3DL2 with Anti-KIR3DL2 Recombinant Antibody Activity: Measured by its binding ability in a functional ELISA. Immobilized Human KIR3DL2(CSB-MP012365HU1) at 2 µg/mL can bind Anti-KIR3DL2 recombinant antibody, the EC₅₀ is 14.18-23.93 ng/mL.



Untransfected HEK-293T cells (green line) and transfected Human KIR3DL2 HEK-293T stable cells (red line) were stained with anti-KIR3DL2 recombinant antibody (2µg/1*10⁶cells), washed and then followed by FITC-conjugated anti-Human IgG Fc antibody and analyzed with flow cytometry.



Usage

For Research Use Only. Not for use in diagnostic or therapeutic procedures.