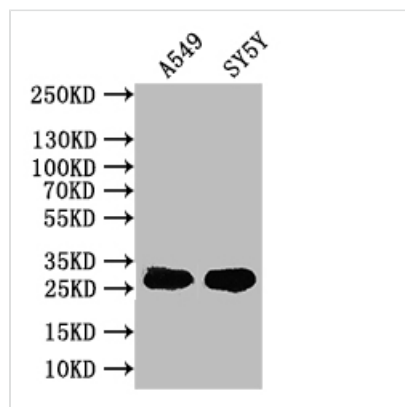




CXCL16 Antibody

| | |
|----------------------------|--|
| Product Code | CSB-PA964027 |
| Storage | Upon receipt, store at -20°C or -80°C. Avoid repeated freeze. |
| Uniprot No. | Q9H2A7 |
| Immunogen | Human CXCL16 |
| Species Reactivity | Human |
| Tested Applications | ELISA, WB; Recommended dilution: WB:1:500-1:5000 |
| Form | Liquid |
| Conjugate | Non-conjugated |
| Storage Buffer | Preservative: 0.03% Proclin 300 Constituents: 50% Glycerol, 0.01M PBS, pH 7.4 |
| Purification Method | Antigen Affinity purified |
| Isotype | IgG |
| Clonality | Polyclonal |
| Product Type | Polyclonal Antibody |
| Immunogen Species | Homo sapiens (Human) |
| Target Names | CXCL16 |

Image



Western Blot

Positive WB detected in: A549 whole cell lysate, SY5Y whole cell lysate

All lanes: CXCL16 antibody at 1:1000

Secondary

Goat polyclonal to rabbit IgG at 1/50000 dilution

Predicted band size: 28 kDa

Observed band size: 28 kDa