

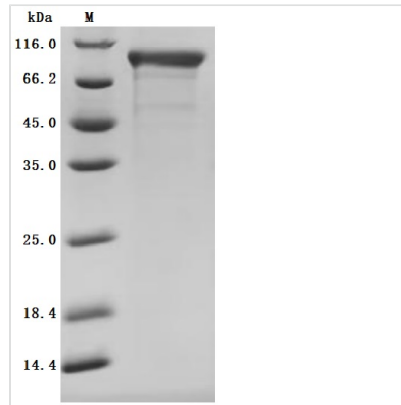


Recombinant *Macaca fascicularis* Cadherin 6(CDH6),partial (Active)

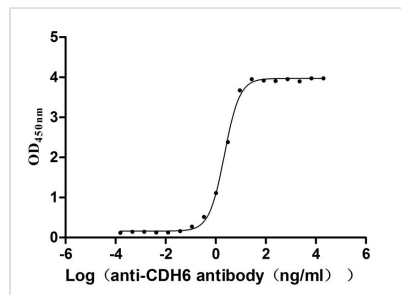
Product Code	CSB-MP4958MOV
Abbreviation	Recombinant Cynomolgus monkey CDH6 protein, partial (Active)
Storage	The shelf life is related to many factors, storage state, buffer ingredients, storage temperature and the stability of the protein itself. Generally, the shelf life of liquid form is 6 months at -20°C/-80°C. The shelf life of lyophilized form is 12 months at -20°C/-80°C.
Uniprot No.	A0A2K5TW62
Form	Lyophilized powder
Storage Buffer	Lyophilized from a 0.2 µm sterile filtered 20 mM Tris-HCl, 0.5 M NaCl, 6% Trehalose, pH 8.0
Product Type	Recombinant Protein
Immunogen Species	<i>Macaca fascicularis</i> (Crab-eating macaque) (Cynomolgus monkey)
Biological Activity	Measured by its binding ability in a functional ELISA. Immobilized <i>Macaca fascicularis</i> CDH6 at 2 µg/mL can bind Anti-CDH6 recombinant antibody (CSB-RA005055MA1HU). The EC50 is 2.076-2.371 ng/mL.
Purity	Greater than 95% as determined by SDS-PAGE.
Sequence	TPLSKRTSGFPAKKRALELSGNSKNELSRSKRSWMWNQFFLLEEYTGSDYQY VGKLSHQDRGDGSLKYILSGDGAGDLFIINENTGDIQATKRLDREEKPVYILR AQAINRRTGRPVEPESEFIIKIHDINDNEPIFTKEVYTATVPEMSDVGTFFVQVT ATDADDPTYGNSAKVVYSILQGQPYFSVESETGIIKTALLNMDRENREQYQVVI QAKDMGGQMGGLSGTTTTVNITLTDVNDNPPRFPQSTYQFKTPESSPPGTPIG RIKASDADVGENAEIEYSITDGEGLDMFDVITDQETQEGIITVKKLLDFEKKKVY TLKVEASNPHVEPRFLYLGPFKDSATVRIVEDVDEPPVFSKLAYILQIREDAQI NTTIGSVTAQDPDAARNPVKYSVDRHTDMDRIFNIDSGNGSIFTSKLLDRETL WHNITVIATEINNPKQSSRVPLYIKVLDVNDNAPEFAEFYETFVCEKAKADQLIQ TLRAVDKDDPYSGHQFSFLAPEAASGSNFTIQDNKDNNTAGILTRKNGYNRHE MSTYLLPVVISDNDYPVQSSTGTVTVRVACDHHGNMQSCHAEALIHPTGLST G
Source	Mammalian cell
Target Names	CDH6
Expression Region	22-614aa
Notes	Repeated freezing and thawing is not recommended. Store working aliquots at 4°C for up to one week.
Tag Info	C-terminal 10xHis-tagged
Mol. Weight	67.4 kDa
Protein Length	Partial



Image



(Tris-Glycine gel) Discontinuous SDS-PAGE (reduced) with 5% enrichment gel and 15% separation gel.



Activity

Measured by its binding ability in a functional ELISA. Immobilized *Macaca fascicularis* CDH6 at 2 μ g/mL can bind Anti-CDH6 recombinant antibody (CSB-RA005055MA1HU)?the EC₅₀ is 2.076-2.371 ng/mL.

Endotoxin

Less than 1.0 EU/ μ g as determined by LAL method.

Reconstitution

We recommend that this vial be briefly centrifuged prior to opening to bring the contents to the bottom. Please reconstitute protein in deionized sterile water to a concentration of 0.1-1.0 mg/mL. We recommend to add 5-50% of glycerol (final concentration) and aliquot for long-term storage at -20°C/-80°C. Our default final concentration of glycerol is 50%. Customers could use it as reference.

Shelf Life

The shelf life is related to many factors, storage state, buffer ingredients, storage temperature and the stability of the protein itself.

Generally, the shelf life of liquid form is 6 months at -20°C/-80°C. The shelf life of lyophilized form is 12 months at -20°C/-80°C.