

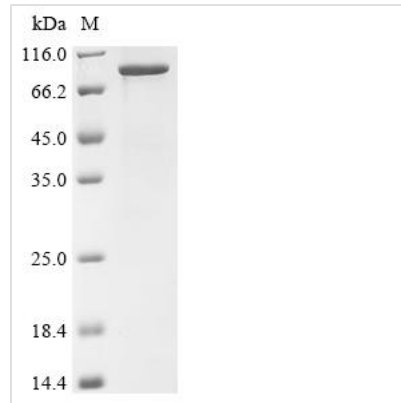


Recombinant Mouse Neural cell adhesion molecule 1 (Ncam1), partial

Product Code	CSB-EP015511MO
Abbreviation	Recombinant Mouse Ncam1 protein, partial
Storage	The shelf life is related to many factors, storage state, buffer ingredients, storage temperature and the stability of the protein itself. Generally, the shelf life of liquid form is 6 months at -20°C/-80°C. The shelf life of lyophilized form is 12 months at -20°C/-80°C.
Uniprot No.	P13595
Form	Liquid or Lyophilized powder
Storage Buffer	If the delivery form is liquid, the default storage buffer is Tris/PBS-based buffer, 5%-50% glycerol. If the delivery form is lyophilized powder, the buffer before lyophilization is Tris/PBS-based buffer, 6% Trehalose.
Product Type	Recombinant Mouse Neural cell adhesion molecule 1 (Ncam1), partial
Immunogen Species	Mus musculus (Mouse)
Sensitivity	Not Test
Purity	Greater than 85% as determined by SDS-PAGE.
Sequence	LQVDIVPSQGEISVGESKFFLCQVAGDAKDKDISWFSPNGEKLSPNQQRISVV WNDDDSSTLIYANIDDAGIYKCVTAEDGTQSEATVNVKIFQKLMFKNAPT QEFKEGEDAVIVCDVSSLPPTIIWKHKGRDVILKKDVRFIVLSNNYLQIRGIKKT DEGTYRCEGRILARGEINFKDIQVIVNVPPTVQARQSIVNATANLGQSVTLVCD ADGFPEPTMSWTKDGEPIENEEEDDEKHIFSDDSELTIRNVDKNDEAEYVCIA ENKAGEQDASIHVKVFAKPKITYVENQTAMELEEQVTLTCEASGDPIPSITWRT STRNISSEKTLDGHMVVRSHARVSSLTLKSIQYTDAGEYICTASNTIGQDSQS MYLEFQYAPKLQGPVAVYTWEGNQVNITCEVFAYPSATISWFRDGLLPSSN YSNIKIYNTPSASYLEVTPDSEDFGNYNCTAVNRIGQESLEFILVQADTPSSPS IDRVEPYSSTAQVQFDEPEATGGVPILKYKAEWKSLGEESWHFKWYDAKEAN MEGIVTIMGLKPETRYSVRLAALNGKGLGEISAATEFKTQPVREPSAPKLEGQ MGEDGNSIKVNLKQDDGGSPIRHYLVKYRALASEWKPEIRLPSGSDHVMLKS LDWNAEYEVYVVAENQQGKSKAAHFVFRTSAQPTAIPANGSPTAGLST
Research Area	Others
Source	E.coli
Target Names	Ncam1
Expression Region	20-711aa
Notes	Repeated freezing and thawing is not recommended. Store working aliquots at 4°C for up to one week.
Tag Info	Tag-Free
Mol. Weight	76.8 kDa

**Protein Length**

Partial

Image

(Tris-Glycine gel) Discontinuous SDS-PAGE (reduced) with 5% enrichment gel and 15% separation gel.

Reconstitution

We recommend that this vial be briefly centrifuged prior to opening to bring the contents to the bottom. Please reconstitute protein in deionized sterile water to a concentration of 0.1-1.0 mg/mL. We recommend to add 5-50% of glycerol (final concentration) and aliquot for long-term storage at -20°C/-80°C. Our default final concentration of glycerol is 50%. Customers could use it as reference.

Shelf Life

The shelf life is related to many factors, storage state, buffer ingredients, storage temperature and the stability of the protein itself. Generally, the shelf life of liquid form is 6 months at -20°C/-80°C. The shelf life of lyophilized form is 12 months at -20°C/-80°C.