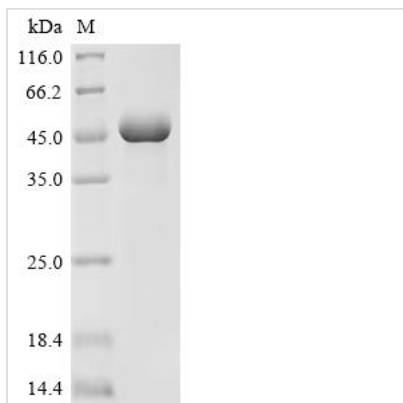


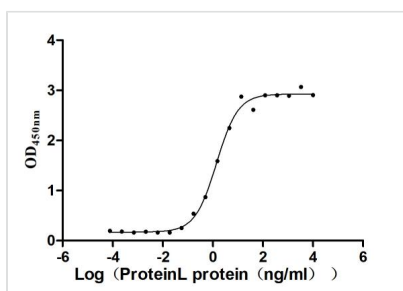


# Recombinant *Finnegoldia magna* ATCC 53516 LPXTG-motif cell wall anchor domain protein, partial, Biotinylated (Active)

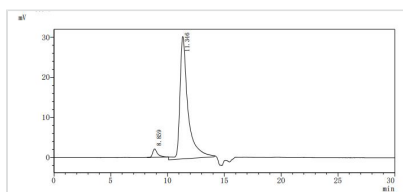
<b>Product Code</b>	CSB-EP5116GUR-B
<b>Abbreviation</b>	Recombinant <i>Finnegoldia</i> HMPREF0391_11247 protein, partial, Biotinylated (Active)
<b>Storage</b>	The shelf life is related to many factors, storage state, buffer ingredients, storage temperature and the stability of the protein itself. Generally, the shelf life of liquid form is 6 months at -20°C/-80°C. The shelf life of lyophilized form is 12 months at -20°C/-80°C.
<b>Uniprot No.</b>	D6S9W1
<b>Form</b>	Lyophilized powder
<b>Storage Buffer</b>	Lyophilized from a 0.2 µm filtered PBS, 6% Trehalose, pH 7.4
<b>Product Type</b>	Recombinant Protein
<b>Immunogen Species</b>	<i>Finnegoldia magna</i> ATCC 53516
<b>Biological Activity</b>	Measured by its binding ability in a functional ELISA. Immobilized anti-protein L antibody (CSB-RA006163MA1HU) at 2 µg/mL can bind Biotinylated Protein L. The EC50 is 1.123-1.761 ng/mL.
<b>Purity</b>	Greater than 95% as determined by SDS-PAGE. Greater than 95% as determined by SEC-HPLC.
<b>Sequence</b>	KEETPETPETDSEEEVTIKANLIFANGSTQTAEFKGTFEKATSEAYAYADTLKK DNGEYTVADVADKGYTLNIKFAGKEKTPEEPKKEEVTIKANLIYADGKTQTAEFKG TFEEATAEAYRYADALKKDNGEYTVADVADKGYTLNIKFAGKEKTPEEPKKEEVTI KANLIYADGKTQTAEFKGTTFEEATAEAYRYADLLAKENGKYTVADVADKGYTLNI KFAGKEKTPEEPKKEEVTIKANLIYADGKTQTAEFKGTFAEATAEAYRYADLLAK ENKYTADLEDGGYTINIRFAGKKVDEKPEEKEQVTIKENIYFEDGTVQTATFK GTFAEATAEAYRYADLLSKEHGKYTADLEDGGYTINIRFAG
<b>Source</b>	<i>E.coli</i>
<b>Target Names</b>	Protein L
<b>Expression Region</b>	106-470aa
<b>Notes</b>	Repeated freezing and thawing is not recommended. Store working aliquots at 4°C for up to one week.
<b>Tag Info</b>	N-terminal 10xHis-Avi-tagged
<b>Mol. Weight</b>	44.2 kDa
<b>Protein Length</b>	Partial
<b>Image</b>	



(Tris-Glycine gel) Discontinuous SDS-PAGE (reduced) with 5% enrichment gel and 15% separation gel.



**Activity**  
 Measured by its binding ability in a functional ELISA. Immobilized anti-CTLA4 antibody (CSB-RA006163MA2HU) at 2 μg/ml can bind Biotinylated Protein L. The EC<sub>50</sub> is 1.123-1.761 ng/mL.



The purity of Protein L was greater than 95% as determined by SEC-HPLC

### Endotoxin

Less than 1.0 EU/ug as determined by LAL method.

### Reconstitution

We recommend that this vial be briefly centrifuged prior to opening to bring the contents to the bottom. Please reconstitute protein in deionized sterile water to a concentration of 0.1-1.0 mg/mL. We recommend to add 5-50% of glycerol (final concentration) and aliquot for long-term storage at -20°C/-80°C. Our default final concentration of glycerol is 50%. Customers could use it as reference.

### Shelf Life

The shelf life is related to many factors, storage state, buffer ingredients, storage temperature and the stability of the protein itself. Generally, the shelf life of liquid form is 6 months at -20°C/-80°C. The shelf life of lyophilized form is 12 months at -20°C/-80°C.