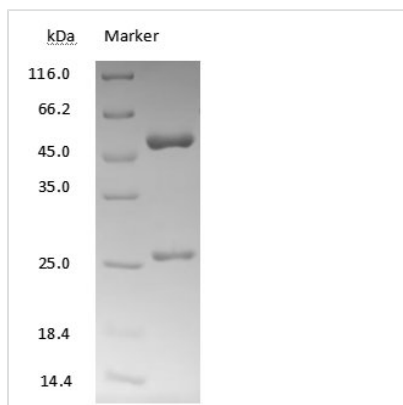




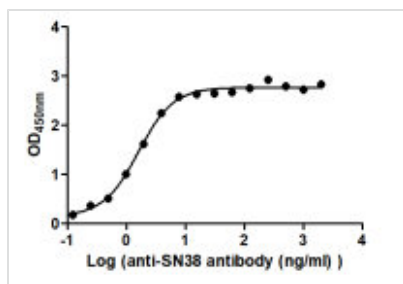
# SN38 Monoclonal Antibody

<b>Product Code</b>	CSB-MA18770711m
<b>Storage</b>	Upon receipt, store at -20°C or -80°C. Avoid repeated freeze.
<b>Immunogen</b>	SN38-BSA
<b>Raised In</b>	Mouse
<b>Species Reactivity</b>	Homo sapiens (Human)
<b>Tested Applications</b>	ELISA
<b>Form</b>	Liquid
<b>Conjugate</b>	Non-conjugated
<b>Storage Buffer</b>	Preservative: 0.03% Proclin 300 Constituents: 50% Glycerol, 0.01M PBS, PH 7.4
<b>Purification Method</b>	>95%, Protein G purified
<b>Isotype</b>	IgG2a
<b>Clonality</b>	Monoclonal
<b>Product Type</b>	Monoclonal Antibody
<b>Research Area</b>	Others
<b>Target Names</b>	SN38
<b>Clone No.</b>	10G11D5

## Image



SN38 antibody on SDS-PAGE under reducing (R) condition. The purity of the protein is greater than 90%.



The Binding Activity of Labetuzumab govitecan (Synonyms: IMMU 130; hMN-14-SN-38) with Anti-SN38 antibody  
Activity: Measured by its binding ability in a functional ELISA. Immobilized Labetuzumab govitecan (Synonyms: IMMU 130; hMN-14-SN-38) at 2 µg/mL can bind Anti-SN38 antibody, the EC<sub>50</sub> is 1.365 to 1.886 ng/mL.



## Usage

For Research Use Only. Not for use in diagnostic or therapeutic procedures.