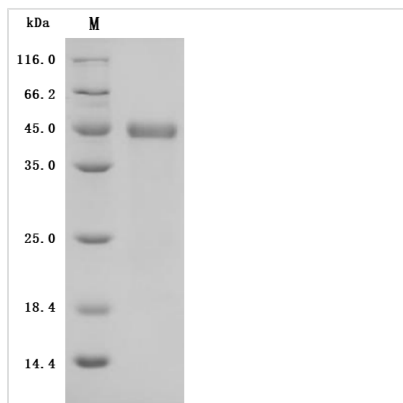


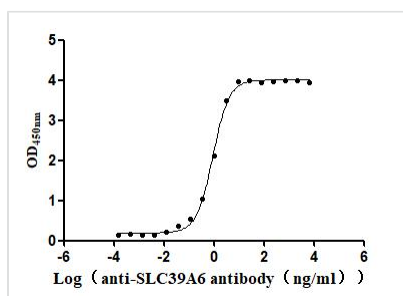


Recombinant *Macaca fascicularis* Zinc transporter ZIP6 isoform X1 (SLC39A6), partial (Active)

Product Code	CSB-BP5043MOV
Abbreviation	Recombinant <i>Cynomolgus</i> monkey SLC39A6 protein, partial (Active)
Storage	The shelf life is related to many factors, storage state, buffer ingredients, storage temperature and the stability of the protein itself. Generally, the shelf life of liquid form is 6 months at -20°C/-80°C. The shelf life of lyophilized form is 12 months at -20°C/-80°C.
Uniprot No.	XP_005586923.1
Form	Lyophilized powder
Storage Buffer	Lyophilized from a 0.2 µm filtered PBS, 6% Trehalose, pH 7.4
Product Type	Recombinant Protein
Immunogen Species	<i>Macaca fascicularis</i> (Crab-eating macaque) (<i>Cynomolgus</i> monkey)
Biological Activity	Measured by its binding ability in a functional ELISA. Immobilized <i>Cynomolgus</i> SLC39A6 at 2 µg/mL can bind Anti-SLC39A6 recombinant antibody (CSB-RA621669MA1HU). The EC50 is 0.8290-0.9864 ng/mL.
Purity	Greater than 95% as determined by SDS-PAGE.
Sequence	LHELKSAAAFQQTTEKISPNWESGINVDLAITTRQYHLQQLFYRYGENNSLSVE GFRKLLQNIQIDKIKRIHIIHDHSDHEHSDHEHSDHEHSHRNHAASG KNKRKALCPEHSDSDSSGKDPRNSQGKGAHRPEHANGRRNVKDSVSTSEVTS TVYNTVSEGTHFLETIETPKLFPKDVSSSTPPSVTEKSLVSRLAGRKTNESMSE PRKGFMYSRNTNENPQECFNASKLLTSHGMGIQVPLNATEFNLYLCPAIINQIDA RSCLIHTSEKKAEIPPKTYSLQI
Source	Baculovirus
Target Names	SLC39A6
Expression Region	21-309aa
Notes	Repeated freezing and thawing is not recommended. Store working aliquots at 4°C for up to one week.
Tag Info	C-terminal 6xHis-tagged
Mol. Weight	33.6 kDa
Protein Length	Partial
Image	



(Tris-Glycine gel) Discontinuous SDS-PAGE (reduced) with 5% enrichment gel and 15% separation gel.



Activity

Measured by its binding ability in a functional ELISA. Immobilized Cynomolgus SLC39A6 at 2 μ g/ml can bind Anti-SLC39A6 recombinant antibody (CSB-RA621669MA1HU). The EC_{50} is 0.8290-0.9864 ng/mL.

Endotoxin

Less than 1.0 EU/ μ g as determined by LAL method.

Reconstitution

We recommend that this vial be briefly centrifuged prior to opening to bring the contents to the bottom. Please reconstitute protein in deionized sterile water to a concentration of 0.1-1.0 mg/mL. We recommend to add 5-50% of glycerol (final concentration) and aliquot for long-term storage at -20°C/-80°C. Our default final concentration of glycerol is 50%. Customers could use it as reference.

Shelf Life

The shelf life is related to many factors, storage state, buffer ingredients, storage temperature and the stability of the protein itself.

Generally, the shelf life of liquid form is 6 months at -20°C/-80°C. The shelf life of lyophilized form is 12 months at -20°C/-80°C.