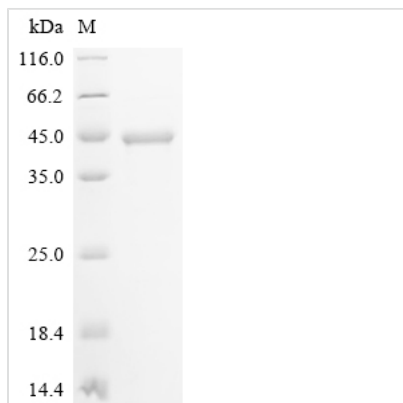




Recombinant Human Serine/threonine-protein kinase pim-2 (PIM2)

Product Code	CSB-EP873725HU
Abbreviation	Recombinant Human PIM2 protein
Storage	The shelf life is related to many factors, storage state, buffer ingredients, storage temperature and the stability of the protein itself. Generally, the shelf life of liquid form is 6 months at -20°C/-80°C. The shelf life of lyophilized form is 12 months at -20°C/-80°C.
Uniprot No.	Q9P1W9
Form	Liquid or Lyophilized powder
Storage Buffer	If the delivery form is liquid, the default storage buffer is Tris/PBS-based buffer, 5%-50% glycerol. If the delivery form is lyophilized powder, the buffer before lyophilization is Tris/PBS-based buffer, 6% Trehalose.
Product Type	Recombinant Human Serine/threonine-protein kinase pim-2 (PIM2)
Immunogen Species	Homo sapiens (Human)
Sensitivity	Not Test
Purity	≥ 95% as determined by SDS-PAGE.
Sequence	MLTKPLQGPPAPPGTPTPPPGGKDREAFEAEYRLGPLLKGGFGTVFAGHRL TDRLQVAIKVIPRNRVLGWSPLSDSVTCPLEVALLWKVGAGGGHHPGVIRLLDW FETQEGFMLVLERPLPAQDLFDYITEKGPLGEGPSRCFFGQVVAAIQHCHSRG VVHRDIKDENILDLRRGCAKLIDFGSGALLHDEPYTDFDGTRVYSPPEWISRH QYHALPATVWSLGILLYDMVCGDIPFERDQEILEAELHFP AHVSPDCCALIRRC LAPKPSSRPSLEEILLDPWMQTPAEDVPLNPSKGGPAPLAWSLLP
Research Area	Cancer
Source	E.coli
Target Names	PIM2
Expression Region	1-311aa
Tag Info	N-terminal 10xHis-tagged and C-terminal Myc-tagged
Mol. Weight	41.7 kDa
Protein Length	Full Length
Image	



(Tris-Glycine gel) Discontinuous SDS-PAGE (reduced) with 5% enrichment gel and 15% separation gel.

Reconstitution

We recommend that this vial be briefly centrifuged prior to opening to bring the contents to the bottom. Please reconstitute protein in deionized sterile water to a concentration of 0.1-1.0 mg/mL. We recommend to add 5-50% of glycerol (final concentration) and aliquot for long-term storage at -20°C/-80°C. Our default final concentration of glycerol is 50%. Customers could use it as reference.

Shelf Life

The shelf life is related to many factors, storage state, buffer ingredients, storage temperature and the stability of the protein itself. Generally, the shelf life of liquid form is 6 months at -20°C/-80°C. The shelf life of lyophilized form is 12 months at -20°C/-80°C.