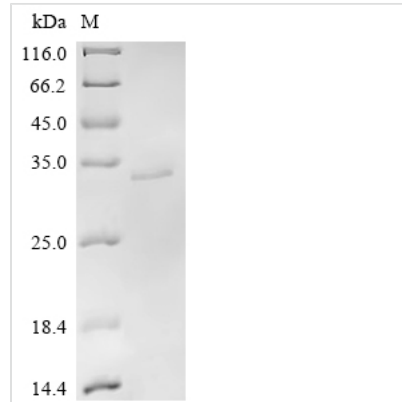




Recombinant Macrovipera lebetina Chymotrypsin-like protease VLCTLP

Product Code	CSB-EP522192MPJc7
Abbreviation	Recombinant Macrovipera lebetina Chymotrypsin-like protease VLCTLP protein
Storage	The shelf life is related to many factors, storage state, buffer ingredients, storage temperature and the stability of the protein itself. Generally, the shelf life of liquid form is 6 months at -20°C/-80°C. The shelf life of lyophilized form is 12 months at -20°C/-80°C.
Uniprot No.	E0Y421
Form	Liquid or Lyophilized powder
Storage Buffer	If the delivery form is liquid, the default storage buffer is Tris/PBS-based buffer, 5%-50% glycerol. If the delivery form is lyophilized powder, the buffer before lyophilization is Tris/PBS-based buffer, 6% Trehalose.
Product Type	Recombinant Macrovipera lebetina Chymotrypsin-like protease VLCTLP
Immunogen Species	Macrovipera lebetina (Levantine viper) (Vipera leb
Sensitivity	Not Test
Purity	Greater than 85% as determined by SDS-PAGE.
Sequence	VVGGDECNINEHRSLVFLYNSSFSGCGGTLINQQWVLSAAHCDMENVQIYLGHL NLRLRNQDEQIRVAEEKFFCLSNKSYTKWDKDIMLIRLNSSVTYNTHIAPLSLPS SPPRVGSVCRIMGWGAITSPNETFPNVPHCANINILRYSVCRAAYRGLPAQSR TLCAGILQGGIGSCMGDSSGPLICNGEIQQIVSWGDDICAQPHKPVHYTKVFD YSDWIQSIAGNTTATCPL
Research Area	Others
Source	E.coli
Target Names	N/A
Expression Region	25-257aa
Tag Info	C-terminal 6xHis-tagged
Mol. Weight	32.6 kDa
Protein Length	Full Length of Mature Protein
Image	



(Tris-Glycine gel) Discontinuous SDS-PAGE (reduced) with 5% enrichment gel and 15% separation gel.

Reconstitution

We recommend that this vial be briefly centrifuged prior to opening to bring the contents to the bottom. Please reconstitute protein in deionized sterile water to a concentration of 0.1-1.0 mg/mL. We recommend to add 5-50% of glycerol (final concentration) and aliquot for long-term storage at -20°C/-80°C. Our default final concentration of glycerol is 50%. Customers could use it as reference.

Shelf Life

The shelf life is related to many factors, storage state, buffer ingredients, storage temperature and the stability of the protein itself. Generally, the shelf life of liquid form is 6 months at -20°C/-80°C. The shelf life of lyophilized form is 12 months at -20°C/-80°C.