



Recombinant Human Protein mono-ADP-ribose transferase PARP8 (PARP8)

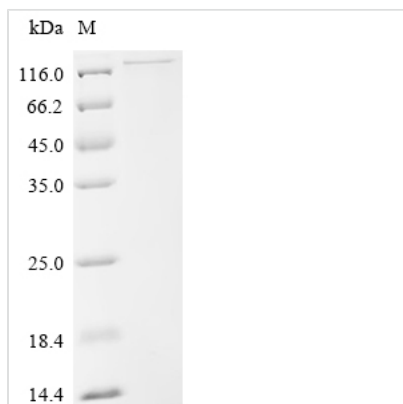
Product Code	CSB-EP847623HU(A4)a2
Abbreviation	Recombinant Human PARP8 protein
Storage	The shelf life is related to many factors, storage state, buffer ingredients, storage temperature and the stability of the protein itself. Generally, the shelf life of liquid form is 6 months at -20°C/-80°C. The shelf life of lyophilized form is 12 months at -20°C/-80°C.
Uniprot No.	Q8N3A8
Form	Liquid or Lyophilized powder
Storage Buffer	If the delivery form is liquid, the default storage buffer is Tris/PBS-based buffer, 5%-50% glycerol. If the delivery form is lyophilized powder, the buffer before lyophilization is Tris/PBS-based buffer, 6% Trehalose.
Product Type	Recombinant Human Protein mono-ADP-ribose transferase PARP8 (PARP8)
Immunogen Species	Homo sapiens (Human)
Sensitivity	Not Test
Purity	≥ 90% as determined by SDS-PAGE.
Sequence	MGMCSRQERIQKDIDVVIQKSRAEKDCLFADFRYSDSTFTFTYVGGPRSVSYS VHVSEDPDNTYVSSSENDEDVLTTEPIPVIFHRIATELRKTNDINCCLSIKSKL QKENGEE SRQNSTVEEDSEGDNDSEEFYGGQVNYDGELHKHPQLEADLSA VREIYGPHAVSLREYGAIDDVDIDLHIDVSFLDEEIAVAWEVIRTEPIIVRLHCSLT QYLNGPVPTVDVFQISTKERFGLGHQLKKIMQTFVTQQWKQSKEKSNCLHNK KLSEKKVKSPLHLFSTLRRSPSYPPPGCGKSKSKLKSEQDGIKTHKLLRRTCS STVKTDDVCVTKSHRTFGRSLSSDPRAEQAMTAIKSHKLLNRPCPAAVKSEEC LTLKSHRLLTRSCSGDPRCEHNTNLKPHKLLRSYSSNLRMEELYGLKNHKLL SKSYSSAPKSSKTELFKEPNAEGRRLSLTSGLIGILTPSSSSSSQLAPNGAKCIP VRDRGFLVQTIEFAEQRIPVLNEYCVVCDPEPHVFQNGPMLRPTVCERELCVFA FQTLGVMNEAADEIATGAQVVDLLVSMCRSALESPRKVVIFEPYPSVVDPNP QMLAFNPRKKNYDRVMKALDSITSIREMTQAPYLEIKKQMDKQDPLAHPLLQW VISSNRSHIVKLPVNRQLKFMHTPHQFLLLSSPPAKESNFRAAKKLFGSTFAFH GSHIENWHSILRNLVVASNTRLQLHGAMYGSGIYLSPMSSISFGYSGMNKKQ KWSAKDEPASSKSSNTSQSQKKGQQSQFLQSRNLKICIALCEVITSSDLHKHG EIWVVPNTDHCVTRFFFVYEDGQVGDANINTQEGGIHKEILRVIGNQTATG
Research Area	Epigenetics and Nuclear Signaling
Source	E.coli
Target Names	PARP8
Expression Region	1-854aa
Tag Info	N-terminal 6xHis-SUMO-tagged



Mol. Weight 108.8 kDa

Protein Length Full Length

Image



(Tris-Glycine gel) Discontinuous SDS-PAGE (reduced) with 5% enrichment gel and 15% separation gel.

Reconstitution

We recommend that this vial be briefly centrifuged prior to opening to bring the contents to the bottom. Please reconstitute protein in deionized sterile water to a concentration of 0.1-1.0 mg/mL. We recommend to add 5-50% of glycerol (final concentration) and aliquot for long-term storage at -20°C/-80°C. Our default final concentration of glycerol is 50%. Customers could use it as reference.

Shelf Life

The shelf life is related to many factors, storage state, buffer ingredients, storage temperature and the stability of the protein itself. Generally, the shelf life of liquid form is 6 months at -20°C/-80°C. The shelf life of lyophilized form is 12 months at -20°C/-80°C.