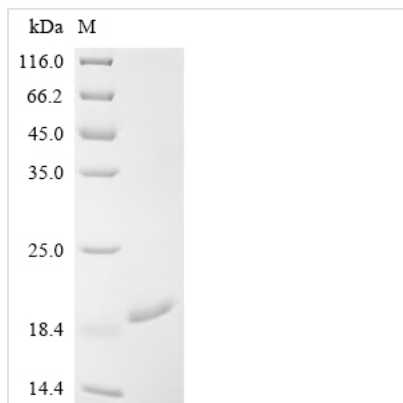




Recombinant Human YTH domain-containing family protein 1 (YTHDF1), partial

Product Code	CSB-EP874843HU1a0
Abbreviation	Recombinant Human YTHDF1 protein, partial
Storage	The shelf life is related to many factors, storage state, buffer ingredients, storage temperature and the stability of the protein itself. Generally, the shelf life of liquid form is 6 months at -20°C/-80°C. The shelf life of lyophilized form is 12 months at -20°C/-80°C.
Uniprot No.	Q9BYJ9
Form	Liquid or Lyophilized powder
Storage Buffer	If the delivery form is liquid, the default storage buffer is Tris/PBS-based buffer, 5%-50% glycerol. If the delivery form is lyophilized powder, the buffer before lyophilization is Tris/PBS-based buffer, 6% Trehalose.
Product Type	Recombinant Human YTH domain-containing family protein 1 (YTHDF1), partial
Immunogen Species	Homo sapiens (Human)
Sensitivity	Not Test
Purity	≥ 95% as determined by SDS-PAGE.
Sequence	GRVFIKSYSEDDIHRSIKYSIWCSTEHGNKRLDSAFRCMSSKGPVYLLFSVNG SGHFVCGVAEMKSPVDYGTSGAGVWSQDKWKGKFDVQWIFVKDVPNNQLRHIR LENNDNKPVTNSRDTQEVPLEKAKQVLKII
Research Area	Cell Biology
Source	E.coli
Target Names	YTHDF1
Expression Region	389-523aa
Tag Info	N-terminal 6xHis-tagged
Mol. Weight	19.5 kDa
Protein Length	Partial
Image	



(Tris-Glycine gel) Discontinuous SDS-PAGE (reduced) with 5% enrichment gel and 15% separation gel.

Reconstitution

We recommend that this vial be briefly centrifuged prior to opening to bring the contents to the bottom. Please reconstitute protein in deionized sterile water to a concentration of 0.1-1.0 mg/mL. We recommend to add 5-50% of glycerol (final concentration) and aliquot for long-term storage at -20°C/-80°C. Our default final concentration of glycerol is 50%. Customers could use it as reference.

Shelf Life

The shelf life is related to many factors, storage state, buffer ingredients, storage temperature and the stability of the protein itself. Generally, the shelf life of liquid form is 6 months at -20°C/-80°C. The shelf life of lyophilized form is 12 months at -20°C/-80°C.