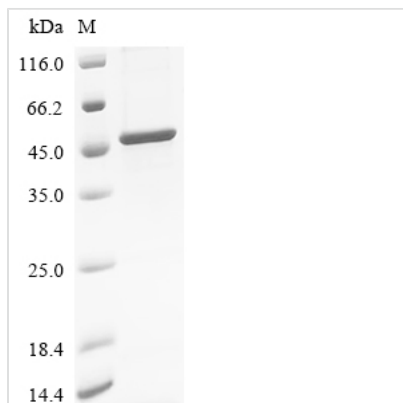




Recombinant Human Protein mono-ADP-ribose transferase PARP10 (PARP10), partial

Product Code	CSB-EP709602HU1
Abbreviation	Recombinant Human PARP10 protein, partial
Storage	The shelf life is related to many factors, storage state, buffer ingredients, storage temperature and the stability of the protein itself. Generally, the shelf life of liquid form is 6 months at -20°C/-80°C. The shelf life of lyophilized form is 12 months at -20°C/-80°C.
Uniprot No.	Q53GL7
Form	Liquid or Lyophilized powder
Storage Buffer	If the delivery form is liquid, the default storage buffer is Tris/PBS-based buffer, 5%-50% glycerol. If the delivery form is lyophilized powder, the buffer before lyophilization is Tris/PBS-based buffer, 6% Trehalose.
Product Type	Recombinant Human Protein mono-ADP-ribose transferase PARP10 (PARP10), partial
Immunogen Species	Homo sapiens (Human)
Sensitivity	Not Test
Purity	Greater than 85% as determined by SDS-PAGE.
Sequence	LEEEAALQLALHRSLEPQQQVAEQEEAAALRQALTLSSLLEQPPLEAEEPPDGG TDGKAQLVVHSAFEQDVEELDRALRAALEVHVQEETVGPWRRTLPAELRARL ERCHGVSVALRGDCTILRGFGAHPARAARHLVALLAGPWDQSLAFPLAASGP TLAQTLKGPWNNLERLAENTGEFQEVVRAFYDTLDAARSSIRVVRVERVSHPL LLQQQYELYRERLLQRCERRPVEQVLYHGTTAPAVPDICAHGFNRSFCGRNA TVYGGKGVYFARRASLSVQDRYSPPNADGHKAVFVARVLTGDYGGQRRGLRA PPLRGPVHLLRYDSAVDCICQPSIFVIFHDTQALPHTLITCEHVPRASPDDPS GLPGRSPDT
Research Area	Epigenetics and Nuclear Signaling
Source	E.coli
Target Names	PARP10
Expression Region	650-1025aa
Tag Info	N-terminal 6xHis-tagged
Mol. Weight	45.5 kDa
Protein Length	Partial
Image	



(Tris-Glycine gel) Discontinuous SDS-PAGE (reduced) with 5% enrichment gel and 15% separation gel.

Reconstitution

We recommend that this vial be briefly centrifuged prior to opening to bring the contents to the bottom. Please reconstitute protein in deionized sterile water to a concentration of 0.1-1.0 mg/mL. We recommend to add 5-50% of glycerol (final concentration) and aliquot for long-term storage at -20°C/-80°C. Our default final concentration of glycerol is 50%. Customers could use it as reference.

Shelf Life

The shelf life is related to many factors, storage state, buffer ingredients, storage temperature and the stability of the protein itself. Generally, the shelf life of liquid form is 6 months at -20°C/-80°C. The shelf life of lyophilized form is 12 months at -20°C/-80°C.