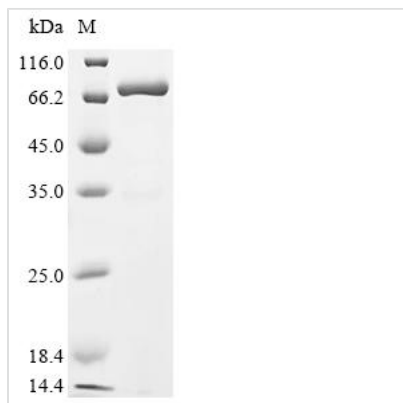




Recombinant Mouse Cell surface glycoprotein CD200 receptor 1 (Cd200r1), partial, Biotinylated

Product Code	CSB-EP863669MO-B
Abbreviation	Recombinant Mouse Cd200r1 protein, partial, Biotinylated
Storage	The shelf life is related to many factors, storage state, buffer ingredients, storage temperature and the stability of the protein itself. Generally, the shelf life of liquid form is 6 months at -20°C/-80°C. The shelf life of lyophilized form is 12 months at -20°C/-80°C.
Uniprot No.	Q9ES57
Form	Liquid or Lyophilized powder
Storage Buffer	If the delivery form is liquid, the default storage buffer is Tris/PBS-based buffer, 5%-50% glycerol. If the delivery form is lyophilized powder, the buffer before lyophilization is Tris/PBS-based buffer, 6% Trehalose.
Product Type	Recombinant Mouse Cell surface glycoprotein CD200 receptor 1 (Cd200r1), partial, Biotinylated
Immunogen Species	Mus musculus (Mouse)
Sensitivity	Not Test
Purity	Greater than 90% as determined by SDS-PAGE.
Sequence	TDKNQTTQNNSSSPLTQVNTTVSVQIGTKALLCCFSIPLTKAVLITWIIKLRGLPS CTIAYKVDTKTNETSCLGRNITWASTPDHSPQLQISAVTLQHEGTYTCETVTPE GNFEKNYDLQVLVPPEVTYFPEKNRSVAVCEAMAGKPAAQISWSPDGDCVTTT ESHSNGTVTVRSTCHWEQNNVSDVSCIVSHLTGNQSLSIELSRGGNQSLRP
Research Area	Cardiovascular
Source	E.coli
Target Names	Cd200r1
Expression Region	26-238aa
Tag Info	N-terminal MBP-tagged and C-terminal 6xHis-Avi-tagged
Mol. Weight	73.5 kDa
Protein Length	Partial
Image	



(Tris-Glycine gel) Discontinuous SDS-PAGE (reduced) with 5% enrichment gel and 15% separation gel.

Reconstitution

We recommend that this vial be briefly centrifuged prior to opening to bring the contents to the bottom. Please reconstitute protein in deionized sterile water to a concentration of 0.1-1.0 mg/mL. We recommend to add 5-50% of glycerol (final concentration) and aliquot for long-term storage at -20°C/-80°C. Our default final concentration of glycerol is 50%. Customers could use it as reference.

Shelf Life

The shelf life is related to many factors, storage state, buffer ingredients, storage temperature and the stability of the protein itself. Generally, the shelf life of liquid form is 6 months at -20°C/-80°C. The shelf life of lyophilized form is 12 months at -20°C/-80°C.