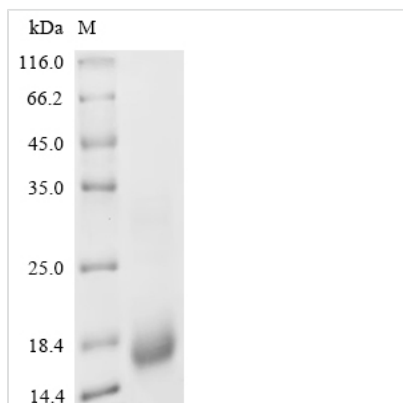




Recombinant Chicken Pro-epidermal growth factor (EGF), Partial

Product Code	CSB-EP007473CH
Abbreviation	Recombinant Chicken EGF protein, partial
Storage	The shelf life is related to many factors, storage state, buffer ingredients, storage temperature and the stability of the protein itself. Generally, the shelf life of liquid form is 6 months at -20°C/-80°C. The shelf life of lyophilized form is 12 months at -20°C/-80°C.
Uniprot No.	Q6PPB4
Form	Liquid or Lyophilized powder
Storage Buffer	If the delivery form is liquid, the default storage buffer is Tris/PBS-based buffer, 5%-50% glycerol. If the delivery form is lyophilized powder, the buffer before lyophilization is Tris/PBS-based buffer, 6% Trehalose.
Product Type	Recombinant Chicken Pro-epidermal growth factor (EGF), Partial
Immunogen Species	Gallus gallus (Chicken)
Sensitivity	Not Test
Purity	≥ 95% as determined by SDS-PAGE.
Sequence	GDSIGCPPAYDSYCLHGGVCNIVSDLQDYACNCVTGYVGERCQFSDLEWWE QQHA
Research Area	Others
Source	E.coli
Target Names	EGF
Expression Region	1026-1080aa
Tag Info	C-terminal 10xHis-tagged
Mol. Weight	13.1 kDa
Protein Length	Partial

Image



(Tris-Glycine gel) Discontinuous SDS-PAGE (reduced) with 5% enrichment gel and 15% separation gel.



Reconstitution

We recommend that this vial be briefly centrifuged prior to opening to bring the contents to the bottom. Please reconstitute protein in deionized sterile water to a concentration of 0.1-1.0 mg/mL. We recommend to add 5-50% of glycerol (final concentration) and aliquot for long-term storage at -20°C/-80°C. Our default final concentration of glycerol is 50%. Customers could use it as reference.

Shelf Life

The shelf life is related to many factors, storage state, buffer ingredients, storage temperature and the stability of the protein itself.

Generally, the shelf life of liquid form is 6 months at -20°C/-80°C. The shelf life of lyophilized form is 12 months at -20°C/-80°C.