

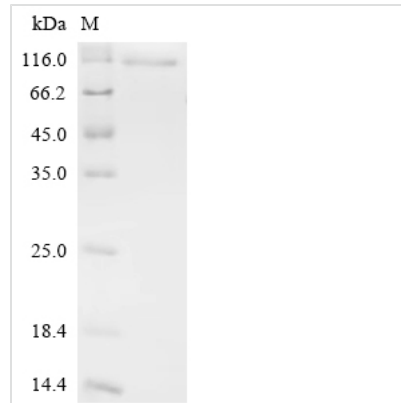


Recombinant Mouse Cold shock domain-containing protein E1 (Csde1)

Product Code	CSB-EP849654MO
Abbreviation	Recombinant Mouse Csde1 protein
Storage	The shelf life is related to many factors, storage state, buffer ingredients, storage temperature and the stability of the protein itself. Generally, the shelf life of liquid form is 6 months at -20°C/-80°C. The shelf life of lyophilized form is 12 months at -20°C/-80°C.
Uniprot No.	Q91W50
Form	Liquid or Lyophilized powder
Storage Buffer	If the delivery form is liquid, the default storage buffer is Tris/PBS-based buffer, 5%-50% glycerol. If the delivery form is lyophilized powder, the buffer before lyophilization is Tris/PBS-based buffer, 6% Trehalose.
Product Type	Recombinant Mouse Cold shock domain-containing protein E1 (Csde1)
Immunogen Species	Mus musculus (Mouse)
Sensitivity	Not Test
Purity	Greater than 90% as determined by SDS-PAGE.
Sequence	MSFDPNLLHNNGHNGYPNGTSAALRETGVIEKLLTSYGFIQCSEARLFFHC SQYNGNLQDLKVGDDVEFEVSSDRRTGKPIAIKLVKIKPEIHPEERMNGQVVC AVPHNLESKSPAAPGQSPTGSVCYERNGEVLYLTYSSEDVEGNVQLETGDKI NFVIDNNKHTGAVSARNIMLLKKKQARCQGVVCAMKEAFGFIERGDVVKEIFF HYSEFKGDLETLQPGDDVEFTIKDRNGKEVATDVRLLPQGTIVFEDISIEHFEGT VTKVIPKVPSKNQNDPLPGRIKVDVIPKELPFGDKDTKSKVTLLEGDHVRFNIS TDRRDKLERATNIEVLSNTFQFTNEAREMGVIAAMRDGFGFIKCVDRDARMFF HFSEILDGNQLHIADEVEFTVVPDMLSAQRNHAIKIKLPKGTVSFHSVSHSDFRF LGTVEKEATFSNPKTTSPNKGKDKAEADGIIAYDDCGVKLTIAFQAKDVEGSTS PQIGDKVEFSISDKQRPGQIATCVRLGRNSNSKRLLGYVATLKDNGFIETA NHDKEIFFHYSEFGDVSLELGMVEYSLSKGGKGNKVS AEKVNKAHSVNGIT EEANPTIYSGKVIRPLRGVDPTQIEYQGMIEIVEEGDMKGEVYYPFGIVGMANKG DCLQKGESVKFQLCVLGQNAQTMAYNITPLRRATVECVKDQFGFINYEVGDSK KLFFHVKEVQDGVELQAGDEVEFSVILNQRTGKCSACNVWRVCEGPKAVAAP RPDRLVNRLKNITLDDASAPRLMVLQRGPDNSMGFGAERKIRQAGVID
Research Area	Epigenetics and Nuclear Signaling
Source	E.coli
Target Names	Csde1
Expression Region	1-798aa
Tag Info	C-terminal 6xHis-tagged
Mol. Weight	95.7 kDa

**Protein Length**

Full Length

Image

(Tris-Glycine gel) Discontinuous SDS-PAGE (reduced) with 5% enrichment gel and 15% separation gel.

Reconstitution

We recommend that this vial be briefly centrifuged prior to opening to bring the contents to the bottom. Please reconstitute protein in deionized sterile water to a concentration of 0.1-1.0 mg/mL. We recommend to add 5-50% of glycerol (final concentration) and aliquot for long-term storage at -20°C/-80°C. Our default final concentration of glycerol is 50%. Customers could use it as reference.

Shelf Life

The shelf life is related to many factors, storage state, buffer ingredients, storage temperature and the stability of the protein itself. Generally, the shelf life of liquid form is 6 months at -20°C/-80°C. The shelf life of lyophilized form is 12 months at -20°C/-80°C.