

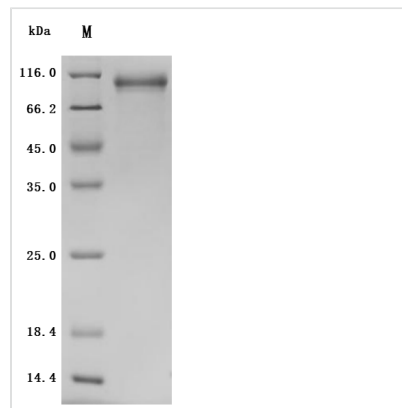


Recombinant Rat Cadherin-6 (Cdh6), partial (Active)

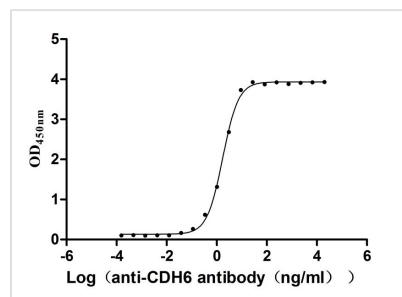
Product Code	CSB-MP005055RA1
Abbreviation	Recombinant Rat CDH6 protein, partial (Active)
Storage	The shelf life is related to many factors, storage state, buffer ingredients, storage temperature and the stability of the protein itself. Generally, the shelf life of liquid form is 6 months at -20°C/-80°C. The shelf life of lyophilized form is 12 months at -20°C/-80°C.
Uniprot No.	P55280
Form	Lyophilized powder
Storage Buffer	Lyophilized from a 0.2 µm filtered PBS, 6% Trehalose, pH 7.4
Product Type	Recombinant Protein
Immunogen Species	Rattus norvegicus (Rat)
Biological Activity	Measured by its binding ability in a functional ELISA. Immobilized Rat CDH6 at 2 µg/mL can bind Anti-CDH6 recombinant antibody (CSB-RA005055MA1HU). The EC50 is 1.630-1.837 ng/mL.
Purity	Greater than 95% as determined by SDS-PAGE. Greater than 95% as determined by SEC-HPLC.
Sequence	TFSNPLSKRTSGFPAKRRALELSANSRNELSRSKRSWMWNQFFLLEEYTGSD YQYVGLHSDQDRGDGSLKYILSGDGAGDLFIINENTGDIQATKRLDREEKPVY ILRAQAINRRTGRPVEPESEFIIKIHDINDNEPIFTKDVYTATVPEMADVGTFFVQ VTATDADDPTYGNSAKVVYSILQQQPYSVESETGIIKTALLNMDRENREQYQ VVIQAKDMGGQMGGLSGTTTNNITLTDVNDNPPRFPQSTYQFKTPESSPPGT PIGRKASDADVGENAEIEYSITDGEGHDMFDVITDQETQEGIIIVKLLDFEKK RVYTLKVEASNPHIEPRFLYLGPFKDSATVRIVVDDVDEPPVFSKPAYILQIRED AQINTTIGSVAAQDPDAARNPVKYSVDRHTDMDRIFNIDSGNGSIFTSKLLDRE TLLWHNITVIATEINNPQSSRVPLYIKVLDVNDNAPEFAEFYETFVCEKAKADQ LIQTLHAVDKDDPYSGHQFSFLAPEAASGSNFTIQDNKDNTAGILTRKNGYNR HEMSTYLLPVVISDNDYPVQSSTGTVTVRVCACDHHGNMQSCHAEALIHPTGL STGA
Source	Mammalian cell
Target Names	CDH6
Expression Region	19-615aa
Notes	Repeated freezing and thawing is not recommended. Store working aliquots at 4°C for up to one week.
Tag Info	C-terminal 10xHis-tagged
Mol. Weight	67.8 kDa
Protein Length	Partial



Image

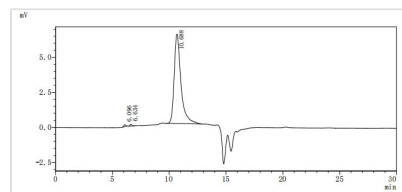


(Tris-Glycine gel) Discontinuous SDS-PAGE (reduced) with 5% enrichment gel and 15% separation gel.



Activity

Measured by its binding ability in a functional ELISA. Immobilized Rat CDH6 at 2 $\mu\text{g/ml}$ can bind Anti-CDH6 recombinant antibody (CSB-RA005055MA1HU). The EC_{50} is 1.630-1.837 ng/mL.



The purity of CDH6 was greater than 95% as determined by SEC-HPLC

Endotoxin

Less than 1.0 EU/ μg as determined by LAL method.

Reconstitution

We recommend that this vial be briefly centrifuged prior to opening to bring the contents to the bottom. Please reconstitute protein in deionized sterile water to a concentration of 0.1-1.0 mg/mL. We recommend to add 5-50% of glycerol (final concentration) and aliquot for long-term storage at $-20^{\circ}\text{C}/-80^{\circ}\text{C}$. Our default final concentration of glycerol is 50%. Customers could use it as reference.

Shelf Life

The shelf life is related to many factors, storage state, buffer ingredients, storage temperature and the stability of the protein itself.

Generally, the shelf life of liquid form is 6 months at $-20^{\circ}\text{C}/-80^{\circ}\text{C}$. The shelf life of lyophilized form is 12 months at $-20^{\circ}\text{C}/-80^{\circ}\text{C}$.