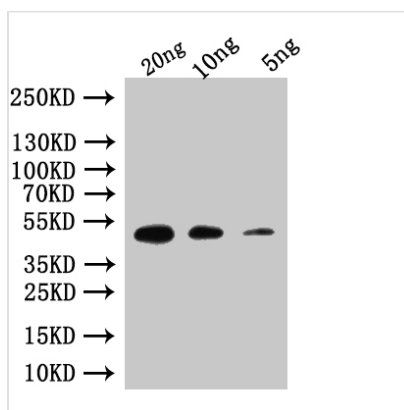




Custom rpoE Antibody

Product Code	CSB-PA358217XA01SXB
Storage	Upon receipt, store at -20°C or -80°C. Avoid repeated freeze.
Uniprot No.	P0A2F0
Immunogen	Recombinant Salmonella typhimurium (strain LT2 / SGSC1412 / ATCC 700720) Custom rpoE protein (1-191aa)
Raised In	Rabbit
Species Reactivity	Salmonella typhimurium (strain LT2 / SGSC1412 / ATCC 700720)
Tested Applications	ELISA, WB; Recommended dilution: WB:1:500-1:5000
Form	Liquid
Conjugate	Non-conjugated
Storage Buffer	Preservative: 0.03% Proclin 300 Constituents: 50% Glycerol, 0.01M PBS, pH 7.4
Purification Method	>95%, Protein G purified
Isotype	IgG
Clonality	Polyclonal
Product Type	Polyclonal Antibody
Immunogen Species	Salmonella typhimurium (strain LT2 / SGSC1412 / ATCC 700720)
Target Names	Custom rpoE Antibody

Image



Western Blot

Positive WB detected in: recombinant protein

All lanes: Custom rpoE Antibody at 1:1000

Secondary

Goat polyclonal to rabbit IgG at 1/50000 dilution

Predicted band size: 47 kDa

Observed band size: 47 kDa

Usage

For Research Use Only. Not for use in diagnostic or therapeutic procedures.