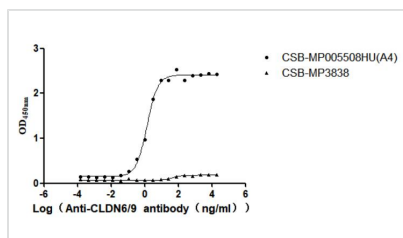




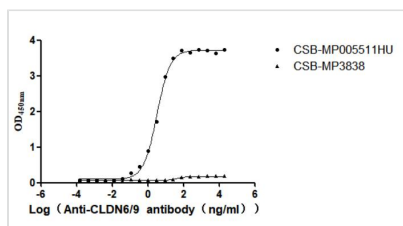
CLDN6/9 Recombinant Monoclonal Antibody

Product Code	CSB-RA005508MA3HU
Storage	Upon receipt, store at -20°C or -80°C. Avoid repeated freeze.
Uniprot No.	P56747
Immunogen	Recombinant Human CLDN6/9 protein
Species Reactivity	Human, Mouse
Tested Applications	ELISA, FC; Recommended dilution: FC:1:50-1:200
Form	Liquid
Conjugate	Non-conjugated
Storage Buffer	Preservative: 0.03% Proclin 300 Constituents: 50% Glycerol, 0.01M PBS, PH 7.4
Purification Method	Affinity-chromatography
Isotype	mFc2a
Clonality	Monoclonal
Product Type	Recombinant Antibody
Immunogen Species	Homo sapiens (Human)
Research Area	Developmental biology;Microbiology?Signal transduction?Stem cells
Target Names	CLDN6/9
Clone No.	9E2

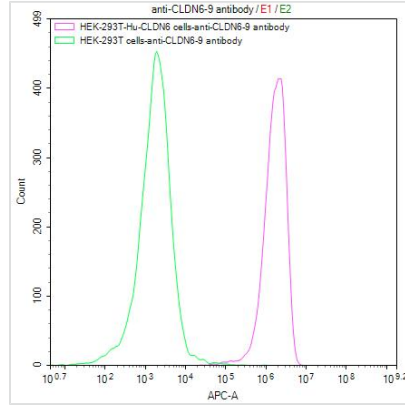
Image



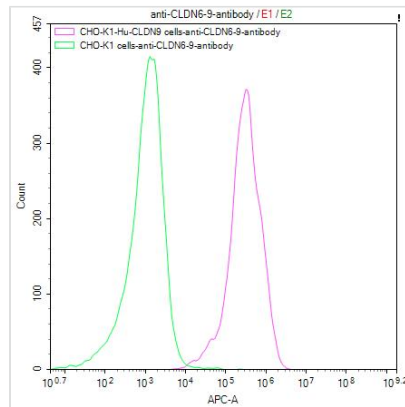
The Binding Activity of Human CLDN6 with Anti-CLDN6-9 recombinant antibody
Activity: Measured by its binding ability in a functional ELISA. Immobilized Human CLDN6 (CSB-MP005508HU(A4)) at 10 µg/mL can bind Anti-CLDN6-9 recombinant antibody. The EC₅₀ is 1.189-1.618 ng/mL. The VLPs (CSB-MP3838) is negative control.



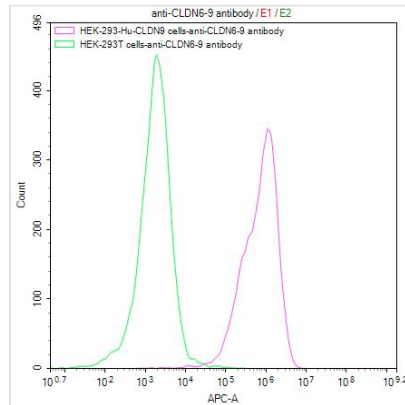
The Binding Activity of Human CLDN6 with Anti-CLDN6-9 recombinant antibody
Activity: Measured by its binding ability in a functional ELISA. Immobilized Human CLDN6-9 (CSB-MP005511HU) at 10 µg/mL can bind Anti-CLDN6-9 recombinant antibody. The EC₅₀ is 2.876-3.657 ng/mL. The VLPs (CSB-MP3838) is negative control.



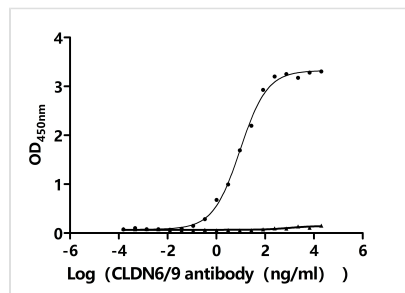
Untransfected HEK-293T cells (green line) and transfected Human CLDN6 HEK-293T stable cells (red line) were stained with anti-CLDN6/9 antibody(CSB-RA005508MA3HU) (2µg/1*10⁶cells), washed and then followed by APC-conjugated anti-Mouse IgG Fc antibody and analyzed with flow cytometry.



Untransfected CHO-K1*10⁶cells), washed and then followed by APC-conjugated anti-Mouse IgG Fc antibody and analyzed with flow cytometry.



Untransfected HEK-293T cells (green line) and transfected Human CLDN9 HEK-293T stable cells (red line) were stained with anti-CLDN6/9 antibody (CSB-RA005508MA3HU) (2µg/1*10⁶cells), washed and then followed by APC-conjugated anti-Mouse IgG Fc antibody and analyzed with flow cytometry.



The Binding Activity of Mouse cldn6 with Anti-CLDN6/9 Recombinant Antibody Activity: Measured by its binding ability in a functional ELISA. Immobilized Mouse cldn6(CSB-MP3347MO) at 5 µg/mL can bind Anti-CLDN6/9 recombinant antibody. The EC₅₀ is 7.349-12.12 ng/mL.

Usage

For Research Use Only. Not for use in diagnostic or therapeutic procedures.