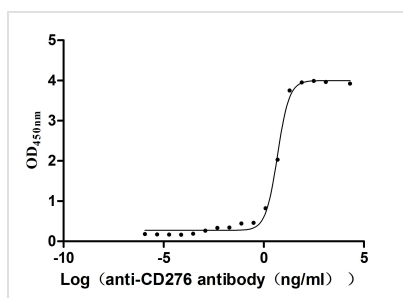




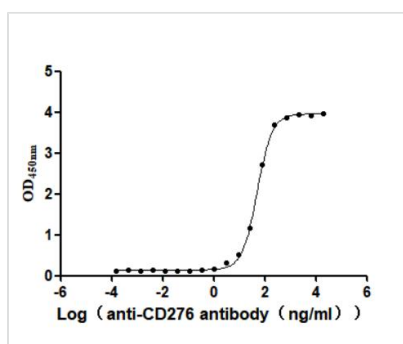
# CD276 Recombinant Monoclonal Antibody

<b>Product Code</b>	CSB-RA733578MA1HU
<b>Storage</b>	Upon receipt, store at -20°C or -80°C. Avoid repeated freeze.
<b>Uniprot No.</b>	Q5ZPR3
<b>Immunogen</b>	Recombinant Human CD276 protein
<b>Species Reactivity</b>	Human, Cynomolgus
<b>Tested Applications</b>	ELISA, FC; Recommended dilution: FC:1:50-1:200
<b>Form</b>	Liquid
<b>Conjugate</b>	Non-conjugated
<b>Storage Buffer</b>	Preservative: 0.03% Proclin 300 Constituents: 50% Glycerol, 0.01M PBS, PH 7.4
<b>Purification Method</b>	Affinity-chromatography
<b>Isotype</b>	hIgG1
<b>Clonality</b>	Monoclonal
<b>Product Type</b>	Recombinant Antibody
<b>Immunogen Species</b>	Homo sapiens (Human)
<b>Research Area</b>	Cancer;Immunology;Stem cells
<b>Target Names</b>	CD276
<b>Clone No.</b>	5F9

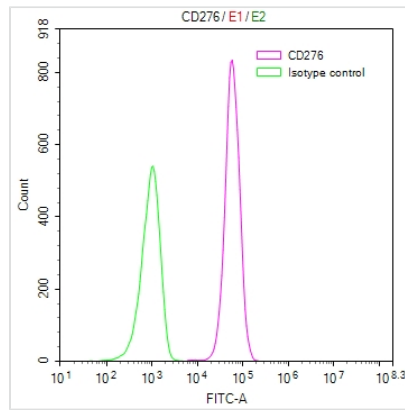
## Image



The Binding Activity of Human CD276 with Anti-CD276 recombinant antibody  
Activity: Measured by its binding ability in a functional ELISA. Immobilized human CD276(CSB-MP5140MOV) at 2 µg/mL can bind Anti-CD276 recombinant antibody. The EC<sub>50</sub> is 4.299-5.373 ng/mL.



The Binding Activity of Human CD276 with Anti-CD276 recombinant antibody  
Activity: Measured by its binding ability in a functional ELISA. Immobilized human CD276(CSB-MP733578HU(F2)) at 2 µg/mL can bind Anti-CD276 recombinant antibody. The EC<sub>50</sub> is 47.12-54.16 ng/mL.



Overlay Peak curve showing MCF7 cells stained with CSB-RA733578MA1HUMA1HU (red line) at 1:100. Then 10% normal goat serum to block non-specific protein-protein interactions followed by the antibody (1ug/1\*10<sup>6</sup>cells) for 45min at 4?. The secondary antibody used was FITC-conjugated Goat Anti-human IgG(H+L) at 1:200 dilution for 35min at 4?. Control antibody (green line) was human IgG (1ug/1\*10<sup>6</sup>cells) used under the same conditions. Acquisition of >10,000 events was performed.

## Usage

For Research Use Only. Not for use in diagnostic or therapeutic procedures.