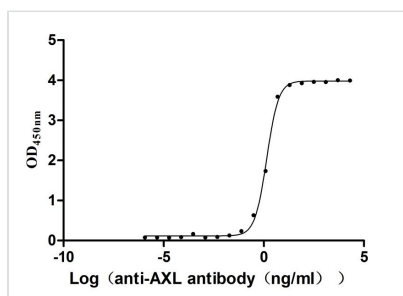




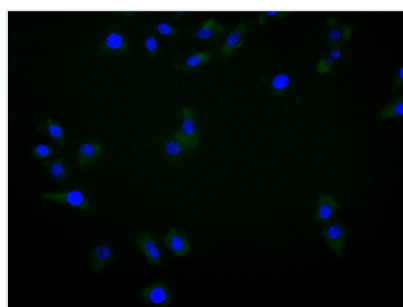
AXL Recombinant Monoclonal Antibody

Product Code	CSB-RA326981MA1HU
Storage	Upon receipt, store at -20°C or -80°C. Avoid repeated freeze.
Uniprot No.	P30530
Immunogen	Recombinant Human AXL protein
Species Reactivity	Human
Tested Applications	ELISA, IF, FC; Recommended dilution: ELISA:1:5000-1:50000, IF:1:50-1:200, FC:1:50-1:200
Form	Liquid
Conjugate	Non-conjugated
Storage Buffer	Preservative: 0.03% Proclin 300 Constituents: 50% Glycerol, 0.01M PBS, PH 7.4
Purification Method	Affinity-chromatography
Isotype	hIgG1
Clonality	Monoclonal
Product Type	Recombinant Antibody
Immunogen Species	Homo sapiens (Human)
Purity	Greater than 90% as determined by SEC-HPLC.
Research Area	Cancer;Cell biology;Tags & Cell Markers;Signal transduction
Target Names	AXL
Clone No.	6G10

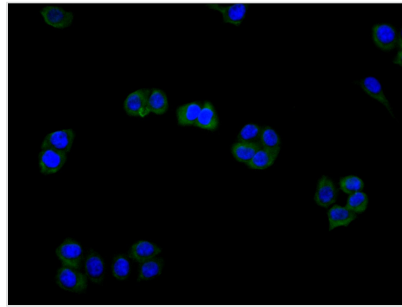
Image



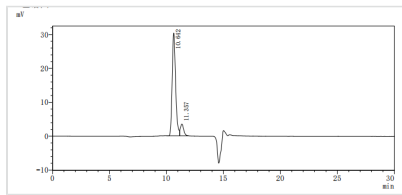
The Binding Activity of Human AXL with Anti-AXL recombinant antibody
Activity: Measured by its binding ability in a functional ELISA. Immobilized human AXL(CSB-MP326981HUd7) at 2 µg/mL can bind Anti-AXL recombinant antibody. The EC₅₀ is 1.308-1.500 ng/mL.



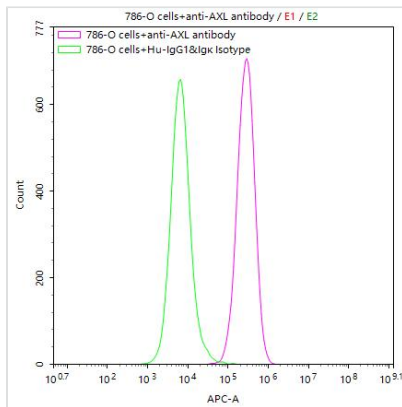
Immunofluorescence staining of HeLa cell with CSB-RA326981MA1HU at 1:30, counter-stained with DAPI. The cells were fixed in 4% formaldehyde and blocked in 10% normal Goat Serum. The cells were then incubated with the antibody overnight at 4°C. The secondary antibody was FITC-conjugated AffiniPure Goat Anti-Human IgG(H+L).



Immunofluorescence staining of PC-3 cell with CSB-RA326981MA1HU at 1:30, counter-stained with DAPI. The cells were fixed in 4% formaldehyde and blocked in 10% normal Goat Serum. The cells were then incubated with the antibody overnight at 4C. The secondary antibody was FITC-conjugated AffiniPure Goat Anti-Human IgG(H+L).



The purity of AXL was greater than 90% as determined by SEC-HPLC



786-O cells were stained with Human IgG1&Igκ Isotype Control (CSB-RA011156MA1HU)(green line) and anti-AXL antibody (CSB-RA326981MA1HU) (2μg/1*10⁶cells) (red line), washed and then followed by APC-conjugated anti-Human IgG Fc antibody and analyzed with flow cytometry.

Usage

For Research Use Only. Not for use in diagnostic or therapeutic procedures.