



# Recombinant Human B-lymphocyte antigen CD20 (MS4A1)-Detergent (Active)

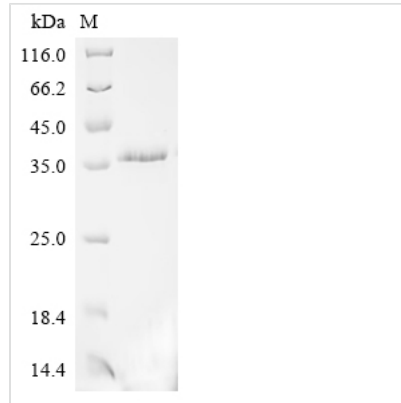
<b>Product Code</b>	CSB-MP015007HU-D
<b>Abbreviation</b>	Recombinant Human MS4A1 protein-Detergent (Active)
<b>Storage</b>	The shelf life is related to many factors, storage state, buffer ingredients, storage temperature and the stability of the protein itself. Generally, the shelf life of liquid form is 6 months at -20°C/-80°C. The shelf life of lyophilized form is 12 months at -20°C/-80°C.
<b>Uniprot No.</b>	P11836
<b>Form</b>	liquid
<b>Storage Buffer</b>	50 mM HEPES,0.15 M NaCl, 0.05% DDM,0.01% CHS,pH7.5
<b>Product Type</b>	Recombinant Protein
<b>Immunogen Species</b>	Homo sapiens (Human)
<b>Biological Activity</b>	<p>①Measured by its binding ability in a functional ELISA. Immobilized Human CD20 at 2 µg/mL on an Nickel Coated plate can bind Anti-CD20 recombinant antibody (CSB-RA015007A1HU). The EC50 is 1.141-1.224 ng/mL.</p> <p>②CD20 Recombinant Monoclonal Antibody (CSB-RA015007A1HU) captured on Protein A Chip can bind Recombinant Human CD20 with an affinity constant of 1.9 nM as detected by MetaSPR Assay (WeSPRTM 200).</p> <p>③Measured by its binding ability in a functional ELISA. Immobilized Human CD20 at 2 µg/mL on an Nickel Coated plate can bind Anti-CD20 recombinant antibody (CSB-RA015007MA3HU). The EC50 is 1.241-1.380 ng/mL.</p> <p>④CD20 Recombinant Monoclonal Antibody (CSB-RA015007MA3HU) captured on Protein A Chip can bind Recombinant Human CD20 with an affinity constant of 0.254 nM as detected by MetaSPR Assay (WeSPRTM 200).</p>
<b>Purity</b>	≥ 85% as determined by SDS-PAGE.
<b>Sequence</b>	<p>MTTPRNSVNGTFPAEPMKGP IAMQSGPKPLFRRMSSLVGPTQSFFMRESKTL  GAVQIMNGLFHIALGGLLMIPAGIYAPICVTVWYPLWGGIMYIISGSLLAATEKNS  RKCLVKGKMIMNSLSLFAAISGMILSIMDILNIKISHFLKMESLNFIRAHTPYINIYN  CEPANPSEKNSPSTQYCYSIQSLFLGILSVMLIFAFFQELVIAGIVENEWKRTCS  RPKSNIVLLSAEEKKEQTIEIKEEVVGLTETSSQPKNEEDIEIPIQEEEEETETN  FPEPPQDQESSPIENDSSP</p>
<b>Source</b>	Mammalian cell
<b>Target Names</b>	MS4A1
<b>Expression Region</b>	1-297aa
<b>Notes</b>	Repeated freezing and thawing is not recommended. Store working aliquots at 4°C for up to one week.
<b>Tag Info</b>	C-terminal 10xHis-tagged


**Mol. Weight**

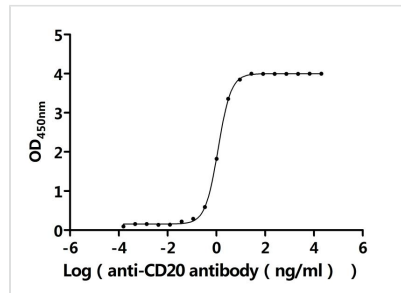
34.4 kDa

**Protein Length**

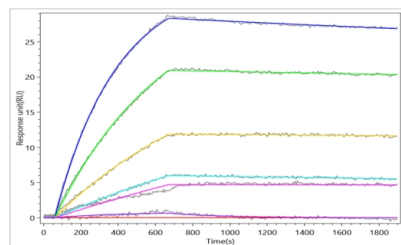
Full Length

**Image**


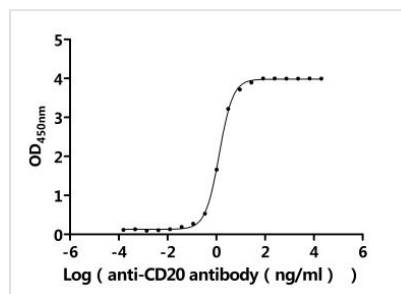
(Tris-Glycine gel) Discontinuous SDS-PAGE (reduced) with 5% enrichment gel and 15% separation gel.


**Activity**

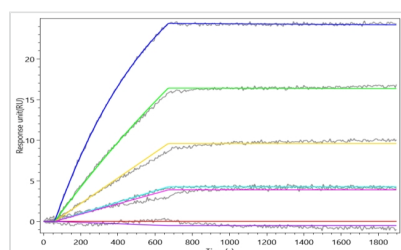
Measured by its binding ability in a functional ELISA. Immobilized Human CD20 at 2  $\mu\text{g/ml}$  on an Nickel Coated plate can bind Anti-CD20 recombinant antibody (CSB-RA015007A1HU). The  $\text{EC}_{50}$  is 1.141-1.224 ng/mL.


**Activity**

CD20 Recombinant Monoclonal Antibody (CSB-RA015007A1HU) captured on Protein A Chip can bind Recombinant Human CD20 with an affinity constant of 1.9 nM as detected by MetaSPR Assay (WeSPRTM 200).


**Activity**

Measured by its binding ability in a functional ELISA. Immobilized Human CD20 at 2  $\mu\text{g/ml}$  on an Nickel Coated plate can bind Anti-CD20 recombinant antibody (CSB-RA015007MA3HU). The  $\text{EC}_{50}$  is 1.241-1.380 ng/mL.


**Activity**

CD20 Recombinant Monoclonal Antibody (CSB-RA015007MA3HU) captured on Protein A Chip can bind Recombinant Human CD20 with an affinity constant of 0.254 nM as detected by MetaSPR Assay (WeSPRTM 200).



---

<b>Endotoxin</b>	Less than 1.0 EU/ug as determined by LAL method.
<b>Reconstitution</b>	We recommend that this vial be briefly centrifuged prior to opening to bring the contents to the bottom. Please reconstitute protein in deionized sterile water to a concentration of 0.1-1.0 mg/mL. We recommend to add 5-50% of glycerol (final concentration) and aliquot for long-term storage at -20°C/-80°C. Our default final concentration of glycerol is 50%. Customers could use it as reference.
<b>Shelf Life</b>	The shelf life is related to many factors, storage state, buffer ingredients, storage temperature and the stability of the protein itself. Generally, the shelf life of liquid form is 6 months at -20°C/-80°C. The shelf life of lyophilized form is 12 months at -20°C/-80°C.

---