

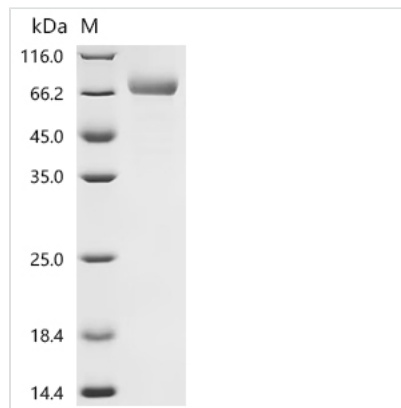


Recombinant *Macaca fascicularis* Leucine rich repeat containing 15 (LRRC15), partial (Active)

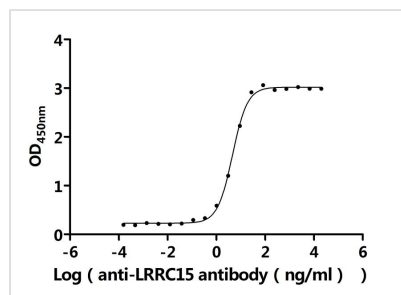
Product Code	CSB-MP5071MOV
Abbreviation	Recombinant <i>Cynomolgus</i> monkey LRRC15 protein, partial (Active)
Storage	The shelf life is related to many factors, storage state, buffer ingredients, storage temperature and the stability of the protein itself. Generally, the shelf life of liquid form is 6 months at -20°C/-80°C. The shelf life of lyophilized form is 12 months at -20°C/-80°C.
Uniprot No.	G7NYR2
Form	Lyophilized powder
Storage Buffer	Lyophilized from a 0.2 µm filtered PBS, 6% Trehalose, pH 7.4
Product Type	Recombinant Protein
Immunogen Species	<i>Macaca fascicularis</i> (Crab-eating macaque) (<i>Cynomolgus</i> monkey)
Biological Activity	Measured by its binding ability in a functional ELISA. Immobilized <i>Macaca fascicularis</i> LRRC15 at 2 µg/mL on an Nickel Coated plate can bind Anti-LRRC15 recombinant antibody (CSB-RA819484MA1HU). The EC50 is 4.100-5.074 ng/mL.
Purity	Greater than 95% as determined by SDS-PAGE. Greater than 95% as determined by SEC-HPLC.
Sequence	YYGCPSECTCSRASQVECTGARIVAVPTPLPWNAMSLQILNTHITELSEPFLN ISALIALRIEKNELSHIMPGAFRNLGSLRYLSLANNKLQVLPIGLFGGLDSLESLL LSSNQLVQIQPAHFSQCSNLKELQLHGNHLEYIPDGAFDHLVGLTKLNLGKNSL THISPRVFQHLGNLQVLRLYENRLTDIPMGTFDGLVNLQELALQQNQIGLLSPG LFHNNHNLQRLYLSNNHISQLPPSIFMQLPQLNRLTLFGNSLKEKELSPGIFGPMP NLRELWLYDNHITSLPDNVFSNLRQLQVLILSRNQISFISPGAFNGLTELRELSL HTNALQDLDGNVFRMLANLQNISLQNNRLRQLPGNIFANVNGLMTIQLQNNQL ENLPLGIFDHLGKLCERLYDNPWRCDSILPLRNWLLLNQPRLGTDTPVPCF SPANVRGQSLIIINVNAVPSVHVPEVPSYPETSWYPDTSSYPDTTSSISSTTELT SPVEDYTDLTTIQVTDDRSVWGMTQAQSG
Source	Mammalian cell
Target Names	LRRC15
Expression Region	22-538aa
Notes	Repeated freezing and thawing is not recommended. Store working aliquots at 4°C for up to one week.
Tag Info	C-terminal 10xHis-tagged
Mol. Weight	59.4 kDa
Protein Length	Partial



Image

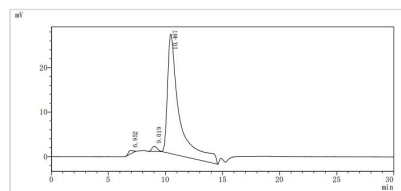


(Tris-Glycine gel) Discontinuous SDS-PAGE (reduced) with 5% enrichment gel and 15% separation gel.



Activity

Measured by its binding ability in a functional ELISA. Immobilized *Macaca fascicularis* LRRC15 at 2 µg/ml on an Nickel Coated plate can bind Anti-LRRC15 recombinant antibody (CSB-RA819484MA1HU). The EC₅₀ is 4.100-5.074 ng/mL.



The purity of LRRC15 was greater than 95% as determined by SEC-HPLC

Endotoxin

Less than 1.0 EU/ug as determined by LAL method.

Reconstitution

We recommend that this vial be briefly centrifuged prior to opening to bring the contents to the bottom. Please reconstitute protein in deionized sterile water to a concentration of 0.1-1.0 mg/mL. We recommend to add 5-50% of glycerol (final concentration) and aliquot for long-term storage at -20°C/-80°C. Our default final concentration of glycerol is 50%. Customers could use it as reference.

Shelf Life

The shelf life is related to many factors, storage state, buffer ingredients, storage temperature and the stability of the protein itself.

Generally, the shelf life of liquid form is 6 months at -20°C/-80°C. The shelf life of lyophilized form is 12 months at -20°C/-80°C.