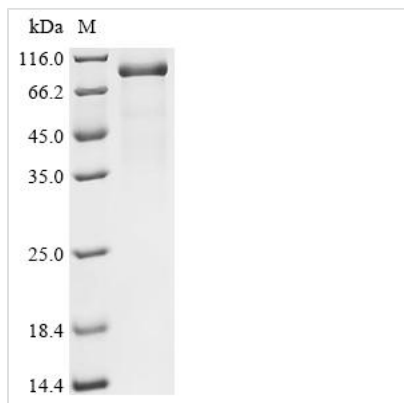




Recombinant Human Complement factor I (CFI)

Product Code	CSB-MP005279HU
Abbreviation	Recombinant Human CFI protein
Storage	The shelf life is related to many factors, storage state, buffer ingredients, storage temperature and the stability of the protein itself. Generally, the shelf life of liquid form is 6 months at -20°C/-80°C. The shelf life of lyophilized form is 12 months at -20°C/-80°C.
Uniprot No.	P05156
Form	Liquid or Lyophilized powder
Storage Buffer	If the delivery form is liquid, the default storage buffer is Tris/PBS-based buffer, 5%-50% glycerol. If the delivery form is lyophilized powder, the buffer before lyophilization is Tris/PBS-based buffer, 6% Trehalose.
Product Type	Recombinant Human Complement factor I (CFI)
Immunogen Species	Homo sapiens (Human)
Sensitivity	Not Test
Purity	≥ 85% as determined by SDS-PAGE.
Sequence	KVTYTSQEDLVEKKCLAKKYTHLSCDKVFCQPWQRCIEGTCVCKLPYQCPKN GTAVCATNRRSFPTYCQQKSLECLHPGTFKFLNNGTCTAEGKFSVSLKHGNTD SEGIVEVKLVDQDKTMFICKSSWSMREANVACL DLGFQQGADTQRRFKLSDL SINSTECLHVHCRGLETSLAECTFTKRRTMGYQDFADVVCYTQKADSPMDDF FQC VNGKYISQMKACDGINDCGDQSDLECKACQKGKGFHCKSGVCIPSQYQ CNGEVDCITGEDEVGCAGFASVTQEETEILTADMDAERRRIKSLLPKLSCGVK NRMHIRRKRIVGGKRAQLGDLPWQVAIKDASGITCGGIYIGGCWILTAHCLRA SKTHRYQIWTTVVDWIHPDLKRIVIEYVDRIIFHENYNAGTYQNDIALIEMKKDG NKKDCELPRSIPACVPWSPYLFQPNDCIVSGWGREKDNERVFSLQWGEVKL ISNCSKIFYGNRFYEKEMECAGTYDGSIDACKGDSGGPLVCMDANNVTYVWG VVS WGENCGKPEFPGVYTKVANYFDWISYHVGRPFISQYNV
Research Area	Immunology
Source	Mammalian cell
Target Names	CFI
Expression Region	19-583aa
Notes	Repeated freezing and thawing is not recommended. Store working aliquots at 4°C for up to one week.
Tag Info	C-terminal 10xHis-tagged
Mol. Weight	67.0 kDa
Protein Length	Full Length of Mature Protein
Image	



(Tris-Glycine gel) Discontinuous SDS-PAGE (reduced) with 5% enrichment gel and 15% separation gel.

Reconstitution

We recommend that this vial be briefly centrifuged prior to opening to bring the contents to the bottom. Please reconstitute protein in deionized sterile water to a concentration of 0.1-1.0 mg/mL. We recommend to add 5-50% of glycerol (final concentration) and aliquot for long-term storage at -20°C/-80°C. Our default final concentration of glycerol is 50%. Customers could use it as reference.

Shelf Life

The shelf life is related to many factors, storage state, buffer ingredients, storage temperature and the stability of the protein itself. Generally, the shelf life of liquid form is 6 months at -20°C/-80°C. The shelf life of lyophilized form is 12 months at -20°C/-80°C.