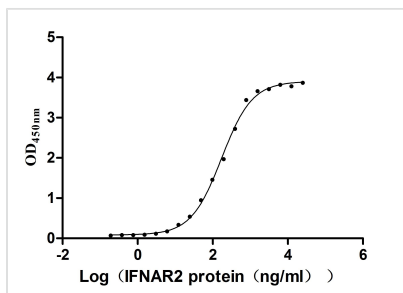


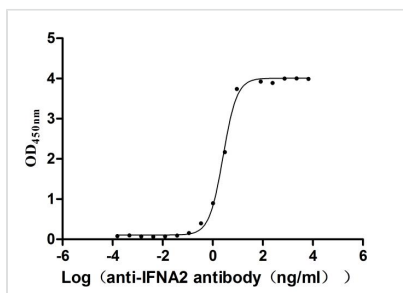


# Recombinant Human Interferon alpha-2 (IFNA2) (Active)

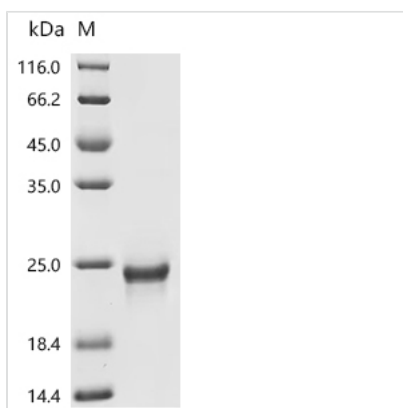
<b>Product Code</b>	CSB-MP360706HU
<b>Abbreviation</b>	Recombinant Human IFNA2 protein (Active)
<b>Storage</b>	The shelf life is related to many factors, storage state, buffer ingredients, storage temperature and the stability of the protein itself. Generally, the shelf life of liquid form is 6 months at -20°C/-80°C. The shelf life of lyophilized form is 12 months at -20°C/-80°C.
<b>Uniprot No.</b>	P01563
<b>Form</b>	Lyophilized powder
<b>Storage Buffer</b>	Lyophilized from a 0.2 µm filtered PBS, 6% Trehalose, pH 7.4
<b>Product Type</b>	Recombinant Protein
<b>Immunogen Species</b>	Homo sapiens (Human)
<b>Biological Activity</b>	①Measured by its binding ability in a functional ELISA. Immobilized Human IFNA2 at 2 µg/mL can bind Human IFNAR2(CSB-MP011047HU). The EC50 is 154.2-191.9 ng/mL.②Measured by its binding ability in a functional ELISA. Immobilized Human IFNA2 at 2 µg/mL can bind Anti-IFNA2 recombinant antibody(CSB-RA365593MA1HU). The EC50 is 2.366-2.818 ng/mL.
<b>Purity</b>	Greater than 95% as determined by SDS-PAGE.
<b>Sequence</b>	CDLPQTHSLGSRRTLMLLAQMRRISLFSCLKDRHDFGFPQEFGNQFQKAETI PVLHEMIQQIFNLFSTKDSSAAWDETLDDKFYTELYQQLNLEACVIQGVGVTE TPLMKEDSILAVRKYFQRITLYLKEKKYSPCAWEVVR AEIMRSFSLSTNLQESL RSKE
<b>Source</b>	Mammalian cell
<b>Target Names</b>	IFNA2
<b>Expression Region</b>	24-188aa
<b>Notes</b>	Repeated freezing and thawing is not recommended. Store working aliquots at 4°C for up to one week.
<b>Tag Info</b>	N-terminal 10xHis-tagged
<b>Mol. Weight</b>	22.9 kDa
<b>Protein Length</b>	Full Length of Mature Protein
<b>Image</b>	


**Activity**

Measured by its binding ability in a functional ELISA. Immobilized Human IFNA2 at 2  $\mu$ g/ml can bind Human IFNAR2(CSB-MP011047HU). The EC<sub>50</sub> is 154.2-191.9 ng/mL.


**Activity**

Measured by its binding ability in a functional ELISA. Immobilized Human IFNA2 at 2  $\mu$ g/ml can bind Anti-IFNA2 recombinant antibody(CSB-RA360706MA2HU). The EC<sub>50</sub> is 2.366-2.818 ng/mL.



(Tris-Glycine gel) Discontinuous SDS-PAGE (reduced) with 5% enrichment gel and 15% separation gel.

**Reconstitution**

We recommend that this vial be briefly centrifuged prior to opening to bring the contents to the bottom. Please reconstitute protein in deionized sterile water to a concentration of 0.1-1.0 mg/mL. We recommend to add 5-50% of glycerol (final concentration) and aliquot for long-term storage at -20°C/-80°C. Our default final concentration of glycerol is 50%. Customers could use it as reference.

**Shelf Life**

The shelf life is related to many factors, storage state, buffer ingredients, storage temperature and the stability of the protein itself. Generally, the shelf life of liquid form is 6 months at -20°C/-80°C. The shelf life of lyophilized form is 12 months at -20°C/-80°C.