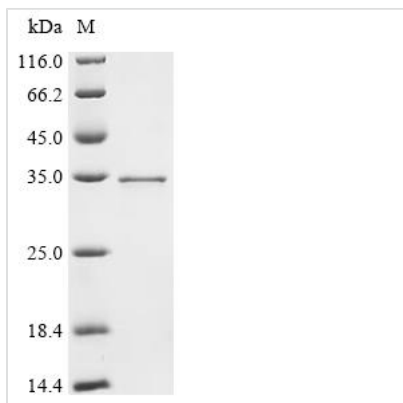




Recombinant *Saccharomyces cerevisiae* DNA repair protein RAD59 (RAD59)

Product Code	CSB-EP619572SVG
Abbreviation	Recombinant <i>Saccharomyces cerevisiae</i> RAD59 protein
Storage	The shelf life is related to many factors, storage state, buffer ingredients, storage temperature and the stability of the protein itself. Generally, the shelf life of liquid form is 6 months at -20°C/-80°C. The shelf life of lyophilized form is 12 months at -20°C/-80°C.
Uniprot No.	Q12223
Form	Liquid or Lyophilized powder
Storage Buffer	If the delivery form is liquid, the default storage buffer is Tris/PBS-based buffer, 5%-50% glycerol. If the delivery form is lyophilized powder, the buffer before lyophilization is Tris/PBS-based buffer, 6% Trehalose.
Product Type	Recombinant <i>Saccharomyces cerevisiae</i> DNA repair protein RAD59 (RAD59)
Immunogen Species	<i>Saccharomyces cerevisiae</i> (strain ATCC 204508 / S288c) (Baker's yeast)
Sensitivity	Not Test
Purity	Greater than 95% as determined by SDS-PAGE.
Sequence	MTIQAKPSSSISYDSTTYGTAPGLDIKEFQIIEDWNGRPASAWSVQRIGLLQSKI ERYTYNIYHNNKYGKHNLSKLIPGHALIQFANETFGYDGWRMDVIDVEARECQ PFTAVNNGENTNTSEVKYTVVAEAQVKVTLKDGNTNTQCGGLGRITLSSRGECY NRSKKEAVGDALKKALLSFEKIILDYETKITNNYYVDGLYGSKKIKNEANTNYNL LSATNSKPTFIKLEDAKGTHIK
Research Area	Others
Source	E.coli
Target Names	RAD59
Expression Region	1-238aa
Notes	Repeated freezing and thawing is not recommended. Store working aliquots at 4°C for up to one week.
Tag Info	C-terminal 6xHis-tagged
Mol. Weight	33.5
Protein Length	Full Length
Image	



(Tris-Glycine gel) Discontinuous SDS-PAGE (reduced) with 5% enrichment gel and 15% separation gel.

Reconstitution

We recommend that this vial be briefly centrifuged prior to opening to bring the contents to the bottom. Please reconstitute protein in deionized sterile water to a concentration of 0.1-1.0 mg/mL. We recommend to add 5-50% of glycerol (final concentration) and aliquot for long-term storage at -20°C/-80°C. Our default final concentration of glycerol is 50%. Customers could use it as reference.

Shelf Life

The shelf life is related to many factors, storage state, buffer ingredients, storage temperature and the stability of the protein itself. Generally, the shelf life of liquid form is 6 months at -20°C/-80°C. The shelf life of lyophilized form is 12 months at -20°C/-80°C.