

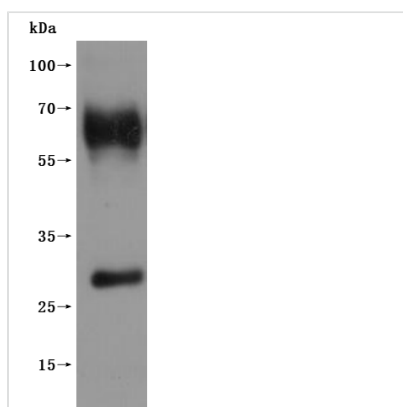


Recombinant Human G-protein coupled receptor 20 (GPR20)-VLPs (Active)

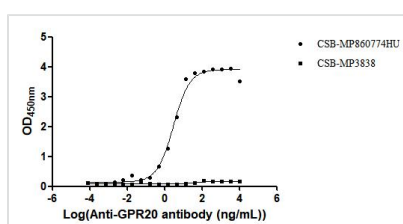
Product Code	CSB-MP860774HU
Abbreviation	Recombinant Human GPR20 protein-VLPs (Active)
Storage	The shelf life is related to many factors, storage state, buffer ingredients, storage temperature and the stability of the protein itself. Generally, the shelf life of liquid form is 6 months at -20°C/-80°C. The shelf life of lyophilized form is 12 months at -20°C/-80°C.
Uniprot No.	Q99678
Form	Lyophilized powder
Storage Buffer	Lyophilized from a 0.2 μm filtered PBS, 6% Trehalose, pH 7.4
Product Type	Recombinant Protein
Immunogen Species	Homo sapiens (Human)
Biological Activity	Measured by its binding ability in a functional ELISA. Immobilized Human GPR20 at 10 μg/mL can bind Anti-GPR20 recombinant antibody(CSB-RA860774MA1HU). The EC50 is 2.431 - 3.239 ng/mL.The VLPs (CSB-MP3838) is negative control.
Purity	Greater than 95% as determined by SEC-HPLC.
Sequence	MPSVSPAGPSAGAVPNATAVTTVRTNASGLEVPLFHLFARLDEELHGTFFPGL WLALMAVHGAIFLAGLVLNGLALYVFCRTRAKTPSVIYTINLVVTDLLVGLSLP TRFAVYYGARGCLRCAPPHVLGYFLNMHCSILFLTCICVDRYLAIVRPEGSRRRC RQPACARAVCAFVWLAAGAVTLSVLGVTGSRPCCRVFALTVLEFLLPLLVISVF TGRIMCALS RPGLLHQGRQRRVRAMQLLLTVLIIFLVCFTPFHARQVAVALWPD MPHHTSLVVYHVAVTLSSLNSCMDPIVYCFVTSGFQATVRGLFGQHGEREPS SGDVVSMHRSSKGSGRHHILSAGPHALTQALANGPEA
Source	Mammalian cell
Target Names	GPR20
Expression Region	1-358aa
Notes	The VLPs are expressed from human 293 cells (HEK293).Mix the sample gently by repeatedly pipetting it up and down. Do not vortex.Repeated freezing and thawing is not recommended.Store the protein at -20°C/-80°C upon receiving it, and ensure to avoid repeated freezing and thawing, otherwise, it will affect the protein activity. The immunization strategy should be optimized (antigen dose, regimen and adjuvant).
Tag Info	C-terminal 10xHis-tagged(This tag can be tested only under denaturing conditions)
Mol. Weight	40.0 kDa
Protein Length	Full Length



Image

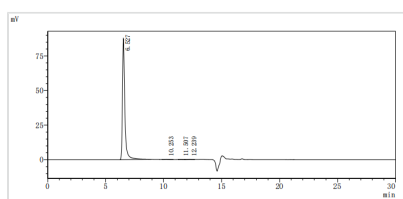


CSB-MP860774HU is detected by Mouse anti-6*His monoclonal antibody.(This tag can be tested only under denaturing conditions.)



Activity

Measured by its binding ability in a functional ELISA. Immobilized Human GPR20 at 10 μ g/ml can bind Anti-GPR20 recombinant antibody(CSB-RA860774MA1HU). The EC_{50} is 2.431 - 3.239 ng/mL.The VLPs (CSB-MP3838) is negative control.



Greater than 95% as determined by SEC-HPLC.

Reconstitution

We recommend that this vial be briefly centrifuged prior to opening to bring the contents to the bottom. Please reconstitute protein in deionized sterile water to a concentration of 0.1-1.0 mg/mL.We recommend to add 5-50% of glycerol (final concentration) and aliquot for long-term storage at -20°C/-80°C. Our default final concentration of glycerol is 50%. Customers could use it as reference.

Shelf Life

The shelf life is related to many factors, storage state, buffer ingredients, storage temperature and the stability of the protein itself. Generally, the shelf life of liquid form is 6 months at -20°C/-80°C. The shelf life of lyophilized form is 12 months at -20°C/-80°C.