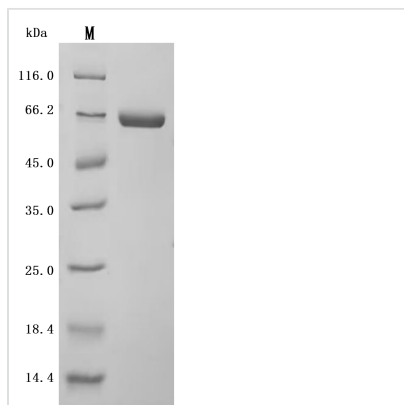


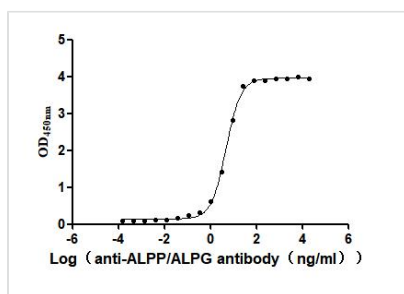


# Recombinant Human Alkaline phosphatase, placental type (ALPP) (Active)

<b>Product Code</b>	CSB-MP001632HU
<b>Abbreviation</b>	Recombinant Human ALPP protein (Active)
<b>Storage</b>	The shelf life is related to many factors, storage state, buffer ingredients, storage temperature and the stability of the protein itself. Generally, the shelf life of liquid form is 6 months at -20°C/-80°C. The shelf life of lyophilized form is 12 months at -20°C/-80°C.
<b>Uniprot No.</b>	P05187
<b>Form</b>	Lyophilized powder
<b>Storage Buffer</b>	Lyophilized from a 0.2 μm filtered PBS, 6% Trehalose, pH 7.4
<b>Product Type</b>	Recombinant Protein
<b>Immunogen Species</b>	Homo sapiens (Human)
<b>Biological Activity</b>	Measured by its binding ability in a functional ELISA. Immobilized Human ALPP at 2 μg/mL can bind Anti-ALPP/ALPG recombinant antibody (CSB-RA001633MA1HU). The EC50 is 4.478-5.236 ng/mL.
<b>Purity</b>	Greater than 95% as determined by SDS-PAGE. Greater than 95% as determined by SEC-HPLC.
<b>Sequence</b>	IIPVEEENPDFWNREAAEALGAAKKLQPAQTAAKNLIIFLGDGMGVSTVTAARIL KGQKKDKLGPFIPLAMDRFPYVALSKTYNVDKHVPDSGATATAYLCGVKGNF QTIGLSAAARFNQCNTTRGNEVISVMNRAKKAGKSVGVTTRVQHASPAGT YAHTVNRNWYSADVPASARQEGCQDIATQLISNMDIDVILGGGRKYMFRMG TPDPEYPDDYSQGGTRLDGKNLVQEWLAKRQGARYVWNRTELMQASLDPSV THLMGLFEPGDMKYEIHRDSTLDPSLMEMTEAALRLLSRNPRGFFLFVEGGRI DHGHESRAYRALTETIMFDDAIERAGQLTSEEDTLISLVTADHSHVFSFGGYP LRGSSIFGLAPGKARDRKAYTVLLYGNPGYVLKDGARPDVTESESGSPEYR QQSAVPLDEETHAGEDVAVFARGPQAHLVHGVQEQTFFIAHVMAFAACLEPYT ACDLAPPAGTTD
<b>Source</b>	Mammalian cell
<b>Target Names</b>	ALPP
<b>Expression Region</b>	23-506aa
<b>Notes</b>	Repeated freezing and thawing is not recommended. Store working aliquots at 4°C for up to one week.
<b>Tag Info</b>	C-terminal 10xHis-tagged
<b>Mol. Weight</b>	54.1 kDa
<b>Protein Length</b>	Full Length of Mature Protein
<b>Image</b>	

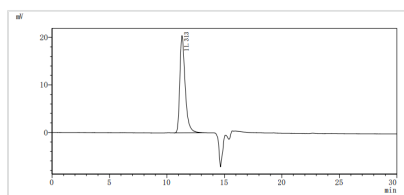


(Tris-Glycine gel) Discontinuous SDS-PAGE (reduced) with 5% enrichment gel and 15% separation gel.

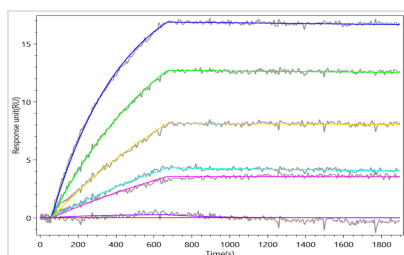


#### Activity

Measured by its binding ability in a functional ELISA. Immobilized Human ALPP at 2  $\mu\text{g/ml}$  can bind Anti-ALPP/ALPG recombinant antibody (CSB-RA001633MA1HU). The  $\text{EC}_{50}$  is 4.478-5.236 ng/mL.



The purity of ALPP was greater than 95% as determined by SEC-HPLC



ALPG Recombinant Monoclonal Antibody (CSB-RA001633MA1HU) captured on Protein A Chip can bind Recombinant Human ALPP protein with an affinity constant of 0.796 nM as detected by MetaSPR Assay (WeSPRTM 200).

## Reconstitution

We recommend that this vial be briefly centrifuged prior to opening to bring the contents to the bottom. Please reconstitute protein in deionized sterile water to a concentration of 0.1-1.0 mg/mL. We recommend to add 5-50% of glycerol (final concentration) and aliquot for long-term storage at  $-20^{\circ}\text{C}/-80^{\circ}\text{C}$ . Our default final concentration of glycerol is 50%. Customers could use it as reference.

## Shelf Life

The shelf life is related to many factors, storage state, buffer ingredients, storage temperature and the stability of the protein itself.

Generally, the shelf life of liquid form is 6 months at  $-20^{\circ}\text{C}/-80^{\circ}\text{C}$ . The shelf life of lyophilized form is 12 months at  $-20^{\circ}\text{C}/-80^{\circ}\text{C}$ .