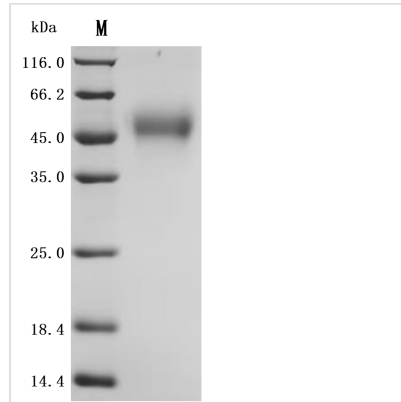


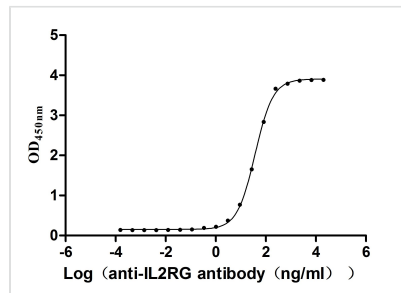


Recombinant Macaca mulatta Cytokine receptor common subunit gamma (IL2RG), partial (Active)

Product Code	CSB-MP2765MOW
Abbreviation	Recombinant Rhesus macaque IL2RG protein, partial (Active)
Storage	The shelf life is related to many factors, storage state, buffer ingredients, storage temperature and the stability of the protein itself. Generally, the shelf life of liquid form is 6 months at -20°C/-80°C. The shelf life of lyophilized form is 12 months at -20°C/-80°C.
Uniprot No.	Q38JL2
Form	Lyophilized powder
Storage Buffer	Lyophilized from a 0.2 µm filtered PBS, 6% Trehalose, pH 7.4
Product Type	Recombinant Protein
Immunogen Species	Macaca mulatta (Rhesus macaque)
Biological Activity	Measured by its binding ability in a functional ELISA. Immobilized Rhesus macaque IL2RG at 2 µg/mL can bind Anti-IL2RG recombinant antibody (CSB-RA011651MA1HU). The EC50 is 33.73-41.04 ng/mL.
Purity	Greater than 95% as determined by SDS-PAGE.
Sequence	LNTTILTPNGNEDATTDFFLTSMPTDSLVSSTLPLPEVQCFVFNVEYMNCTWN SSSEPQPTNLTLYWYKNSDNDKVQKCSHYLFSEEITSGCQLQEKEIHLYQTF VVQLQDPREPRRQATQMLKLQNLVIPWAPENLTLRKLSESQLELNWNNRFLN HCLEHLVQYRTDWDHSWTEQSVDYRHKFSLPSVDGQKRYTFRVRSRFPNPLC GSAQHWSEWSHPIHWGSNSSKENP
Source	Mammalian cell
Target Names	IL2RG
Expression Region	23-255aa
Notes	Repeated freezing and thawing is not recommended. Store working aliquots at 4°C for up to one week.
Tag Info	C-terminal 10xHis-tagged
Mol. Weight	28.8 kDa
Protein Length	Partial
Image	



(Tris-Glycine gel) Discontinuous SDS-PAGE (reduced) with 5% enrichment gel and 15% separation gel.



Activity

Measured by its binding ability in a functional ELISA. Immobilized Rhesus macaque IL2RG at 2 $\mu\text{g/ml}$ can bind Anti-IL2RG recombinant antibody (CSB-RA011651MA1HU). The EC_{50} is 33.73-41.04 ng/mL.

Reconstitution

We recommend that this vial be briefly centrifuged prior to opening to bring the contents to the bottom. Please reconstitute protein in deionized sterile water to a concentration of 0.1-1.0 mg/mL. We recommend to add 5-50% of glycerol (final concentration) and aliquot for long-term storage at $-20^{\circ}\text{C}/-80^{\circ}\text{C}$. Our default final concentration of glycerol is 50%. Customers could use it as reference.

Shelf Life

The shelf life is related to many factors, storage state, buffer ingredients, storage temperature and the stability of the protein itself.

Generally, the shelf life of liquid form is 6 months at $-20^{\circ}\text{C}/-80^{\circ}\text{C}$. The shelf life of lyophilized form is 12 months at $-20^{\circ}\text{C}/-80^{\circ}\text{C}$.