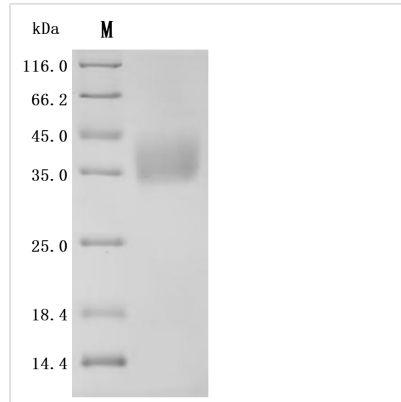


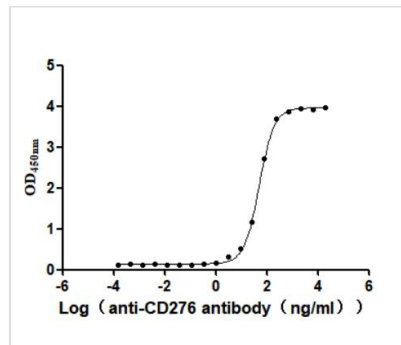


Recombinant Human CD276 antigen (CD276), partial (Active)

Product Code	CSB-MP733578HU(F2)
Abbreviation	Recombinant Human CD276 protein, partial (Active)
Storage	The shelf life is related to many factors, storage state, buffer ingredients, storage temperature and the stability of the protein itself. Generally, the shelf life of liquid form is 6 months at -20°C/-80°C. The shelf life of lyophilized form is 12 months at -20°C/-80°C.
Uniprot No.	Q5ZPR3-2
Form	Lyophilized powder
Storage Buffer	Lyophilized from a 0.2 μm filtered PBS, 6% Trehalose, pH 7.4
Product Type	Recombinant Protein
Immunogen Species	Homo sapiens (Human)
Biological Activity	Measured by its binding ability in a functional ELISA. Immobilized human CD276 at 2 μg/mL can bind Anti-CD276 recombinant antibody(CSB-RA733578MA1HU). The EC50 is 47.12-54.16 ng/mL.
Purity	Greater than 95% as determined by SDS-PAGE. Greater than 95% as determined by SEC-HPLC.
Sequence	LEVQVPEDPVVALVGTDATLCCSFSPEPGFSLAQLNLIWQLTDTKQLVHSFAE GQDQGSAYANRTALFPDLLAQGNASLRLQRVRADEGSFTCFVSIRDFGSAA VSLQVAAPYSKPSMTLEPNKDLRPGDTVITICSSYRGYPEAEVFWQDGQGVP LTGNVTTSQMANEQGLFDVHSVLRVVLGANGTYSCLVRNPVLQQDAHGSVTI TGQPMTFP
Source	Mammalian cell
Target Names	CD276
Expression Region	29-245aa
Notes	Repeated freezing and thawing is not recommended. Store working aliquots at 4°C for up to one week.
Tag Info	C-terminal 10xHis-tagged
Mol. Weight	24.7 kDa
Protein Length	Partial of Isoform 2
Image	

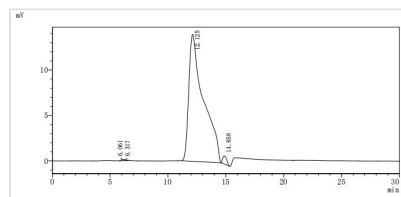


(Tris-Glycine gel) Discontinuous SDS-PAGE (reduced) with 5% enrichment gel and 15% separation gel.



Activity

Measured by its binding ability in a functional ELISA. Immobilized human CD276 at 2 µg/ml can bind Anti-CD276 recombinant antibody(CSB-RA733578MA1HU). The EC₅₀ is 47.12-54.16 ng/mL.



The purity of CD276 was greater than 95% as determined by SEC-HPLC

Reconstitution

We recommend that this vial be briefly centrifuged prior to opening to bring the contents to the bottom. Please reconstitute protein in deionized sterile water to a concentration of 0.1-1.0 mg/mL. We recommend to add 5-50% of glycerol (final concentration) and aliquot for long-term storage at -20°C/-80°C. Our default final concentration of glycerol is 50%. Customers could use it as reference.

Shelf Life

The shelf life is related to many factors, storage state, buffer ingredients, storage temperature and the stability of the protein itself.

Generally, the shelf life of liquid form is 6 months at -20°C/-80°C. The shelf life of lyophilized form is 12 months at -20°C/-80°C.