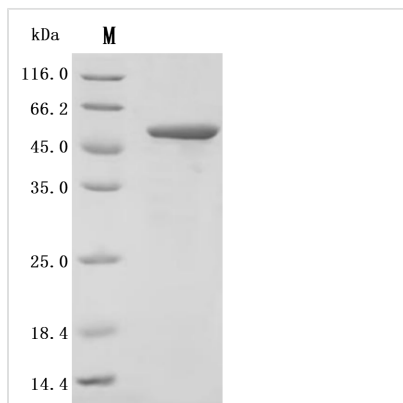


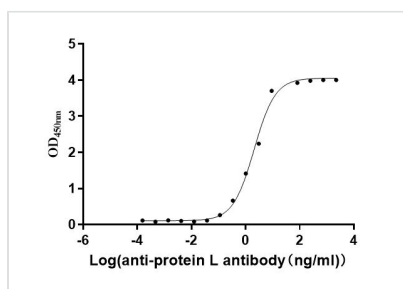


Recombinant Finegoldia magna ATCC 53516 LPXTG-motif cell wall anchor domain protein, partial (Active)

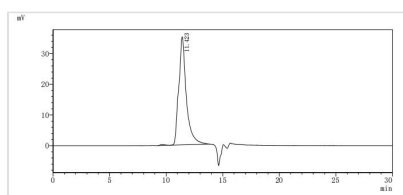
Product Code	CSB-MP5116GUR
Abbreviation	Recombinant Finegoldia HMPREF0391_11247 protein, partial (Active)
Storage	The shelf life is related to many factors, storage state, buffer ingredients, storage temperature and the stability of the protein itself. Generally, the shelf life of liquid form is 6 months at -20°C/-80°C. The shelf life of lyophilized form is 12 months at -20°C/-80°C.
Uniprot No.	D6S9W1
Form	Lyophilized powder
Storage Buffer	Lyophilized from a 0.2 µm filtered PBS, 6% Trehalose, pH 7.4
Product Type	Recombinant Protein
Immunogen Species	Finegoldia magna ATCC 53516
Biological Activity	Measured by its binding ability in a functional ELISA. Immobilized Peptostreptococcus magnus protein L at 2 µg/mL can bind Anti-protein L recombinant antibody(CSB-RA006163MA1HU).The EC50 is 1.601-1.944 ng/mL.
Purity	Greater than 95% as determined by SDS-PAGE. Greater than 95% as determined by SEC-HPLC.
Sequence	KEETPETPETDSEEEVTIKANLIFANGSTQTAEFKGTFEKATSEAYAYADTLKK DNGEYTVDVADKGYTLNIKFAGKEKTPEEPKKEEVTIKANLIYADGKTQTAEFKG TFEEATAEAYRYADALKKDNGEYTVDVADKGYTLNIKFAGKEKTPEEPKKEEVTI KANLIYADGKTQTAEFKGTFEATAEAYRYADLLAKENGKYTVDVADKGYTLNI KFAGKEKTPEEPKKEEVTIKANLIYADGKTQTAEFKGTFAEATAEAYRYADLLAK ENGKYTADLEDGGYTINIRFAGKKVDEKPEEKEQVTIKENIYFEDGTVQTATFK GTFAEATAEAYRYADLLSKEHGKYTADLEDGGYTINIRFAG
Source	Mammalian cell
Expression Region	106-470aa
Notes	Repeated freezing and thawing is not recommended. Store working aliquots at 4°C for up to one week.
Tag Info	N-terminal 10xHis-tagged
Mol. Weight	43.3 kDa
Protein Length	Partial
Image	



(Tris-Glycine gel) Discontinuous SDS-PAGE (reduced) with 5% enrichment gel and 15% separation gel.



Activity
Measured by its binding ability in a functional ELISA. Immobilized *Peptostreptococcus magnus* protein L at 2 µg/ml can bind Anti-CTLA4 recombinant antibody(CSB-RA006163MA2HU).The EC₅₀ is 1.601-1.944 ng/mL.



The purity of Protein L was greater than 95% as determined by SEC-HPLC

Reconstitution

We recommend that this vial be briefly centrifuged prior to opening to bring the contents to the bottom. Please reconstitute protein in deionized sterile water to a concentration of 0.1-1.0 mg/mL. We recommend to add 5-50% of glycerol (final concentration) and aliquot for long-term storage at -20°C/-80°C. Our default final concentration of glycerol is 50%. Customers could use it as reference.

Shelf Life

The shelf life is related to many factors, storage state, buffer ingredients, storage temperature and the stability of the protein itself. Generally, the shelf life of liquid form is 6 months at -20°C/-80°C. The shelf life of lyophilized form is 12 months at -20°C/-80°C.