



Recombinant Dog Folate hydrolase 1 (folh1), partial

Product Code	CSB-MP5772DO
Abbreviation	Recombinant Dog folh1 protein, partial
Storage	The shelf life is related to many factors, storage state, buffer ingredients, storage temperature and the stability of the protein itself. Generally, the shelf life of liquid form is 6 months at -20°C/-80°C. The shelf life of lyophilized form is 12 months at -20°C/-80°C.
Uniprot No.	I4IY07
Form	Liquid or Lyophilized powder
Storage Buffer	If the delivery form is liquid, the default storage buffer is Tris/PBS-based buffer, 5%-50% glycerol. If the delivery form is lyophilized powder, the buffer before lyophilization is Tris/PBS-based buffer, 6% Trehalose, pH 8.0.
Product Type	Recombinant Dog Folate hydrolase 1 (folh1), partial
Immunogen Species	Canis lupus familiaris (Dog) (Canis familiaris)
Sensitivity	Not Test
Purity	≥ 95% as determined by SDS-PAGE. ≥ 95% as determined by SEC-HPLC.
Sequence	KSPSEPTNIVPQHDMKKAFLDELKAENIKRFLYNFTRLPHLAGTERNFQLAKQIQSQWKEFGLDSVELAHYDVLLSYPNKTHPNYISIIDEDGNEIFNSSLFEP PPPGYENVSDVVPFNAFSPQGMPEGDLVYVNYAQTEDFFKLERDLKINCSGKIVIARYGKIFRGNKVKNAQLAGAKGVILYSDPADYFAPGVKSYPDGWNLPGGGVQRGNILNLNGAGDPLTPGYPANAYARRREVTEAVGLPSIPVHPIGYNDAQKLEKMGGAAPPDSSWRGGLQVPYNVGPFTGNSSTQKVKMHIHSNNKVTRIYNVIGTLRGAVEPDRYVILGGHRDSWVFGGIDPQSGAAVVHEIVRSFGTLKKEGWRRRTILFASWDAEEFGLLGSTEWAEENSRVLQERGVAYINADSSIEGNYTLRVDCTPLMYSLVYNLTKEIQSPDEGFEGKSLYESWNEKSPSPEFSGMPRISKLKSGNDFEVFFQRLGISSGRARYTKNWETSKFRSYPLYHSVYETYELVEKFYDPTFKYHLTVAQVRGGMVFEANSIVLPFDCRDYAVVLRKYADKIYNISMKHPQEMKTVSVSFDLSLFAVKNFTEIASKFNERLEDLTKNPILLRIMNDQLMFLERAFIDPLGLPDRPFYRHIIYAPSSHNKYAGESFPGIYDALFDIESKVDPSKAWGEVQRQISIAAFTVQAAAGTLREVA
Research Area	Cancer
Source	Mammalian cell
Target Names	folh1
Expression Region	72-779aa
Notes	Repeated freezing and thawing is not recommended. Store working aliquots at 4°C for up to one week.

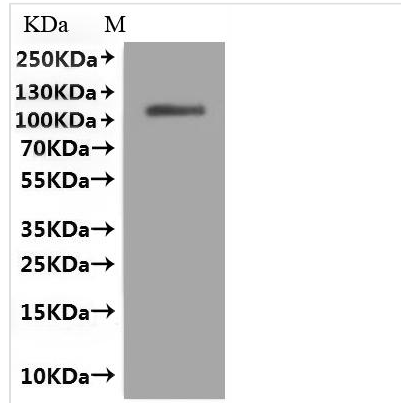


Tag Info N-terminal 6xHis-Myc-tagged

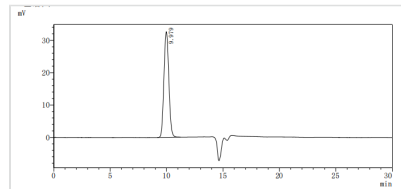
Mol. Weight 83.9 kDa

Protein Length Partial

Image



(Tris-Glycine gel) Discontinuous SDS-PAGE (reduced) with 5% enrichment gel and 15% separation gel.



The purity of folh1 was greater than 95% as determined by SEC-HPLC

Reconstitution

We recommend that this vial be briefly centrifuged prior to opening to bring the contents to the bottom. Please reconstitute protein in deionized sterile water to a concentration of 0.1-1.0 mg/mL. We recommend to add 5-50% of glycerol (final concentration) and aliquot for long-term storage at -20°C/-80°C. Our default final concentration of glycerol is 50%. Customers could use it as reference.

Shelf Life

The shelf life is related to many factors, storage state, buffer ingredients, storage temperature and the stability of the protein itself. Generally, the shelf life of liquid form is 6 months at -20°C/-80°C. The shelf life of lyophilized form is 12 months at -20°C/-80°C.