

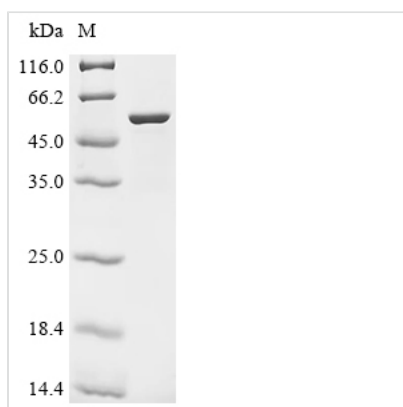


Recombinant *Hypsibius exemplaris* Cytosolic-abundant heat soluble protein 89226 (CAHS 89226)

Product Code	CSB-EP5868GWVb1
Abbreviation	Recombinant <i>Hypsibius exemplaris</i> CAHS 89226 protein
Storage	The shelf life is related to many factors, storage state, buffer ingredients, storage temperature and the stability of the protein itself. Generally, the shelf life of liquid form is 6 months at -20°C/-80°C. The shelf life of lyophilized form is 12 months at -20°C/-80°C.
Uniprot No.	P0CU47
Form	Liquid or Lyophilized powder
Storage Buffer	If the delivery form is liquid, the default storage buffer is Tris/PBS-based buffer, 5%-50% glycerol. If the delivery form is lyophilized powder, the buffer before lyophilization is Tris/PBS-based buffer, 6% Trehalose, pH 8.0.
Product Type	Recombinant <i>Hypsibius exemplaris</i> Cytosolic-abundant heat soluble protein 89226 (CAHS 89226)
Immunogen Species	<i>Hypsibius exemplaris</i> (Freshwater tardigrade)
Sensitivity	Not Test
Purity	≥ 95% as determined by SDS-PAGE.
Sequence	MATKESKYERVEKVNVDADGATLVKNIGEDRGKEDPGMNFQDKRPANLVPGA PAGVIPNRIESLPTDRAGQRLREHLSESERLRVSRSSSTSSKSSSFVEPSLKYRG EIGPIGKNGEFVASSNRQNSSSNVSSSDNSERASPASRNSNPGMNNGMTTQ RTTVITESSVQGLGAQRTVPIQPHQQREDHEVITESHARAPETT VVTIPTTRF ESAQLESRRDGRITYTEDKELTIPAPVVAPQIHAHQQVNMSGGTSATIHATDDL HLASEAQINDMGPEEYERYRAKVEALARIHEDTSRKAAYR NAVEADAELIR QTLERQHMRDIEFRKDLVESSVDRQQQEIRLEAEYAMRALEQERVNARAALD QAMASTNIDVNIDSAIGTTTHSQGRVTTTSESRTSQARGPATAAVI
Research Area	Others
Source	E.coli
Target Names	CAHS 89226
Expression Region	1-414aa
Notes	Repeated freezing and thawing is not recommended. Store working aliquots at 4°C for up to one week.
Tag Info	N-terminal 10xHis-tagged and C-terminal Myc-tagged
Mol. Weight	50.5 kDa
Protein Length	Full Length



Image



(Tris-Glycine gel) Discontinuous SDS-PAGE (reduced) with 5% enrichment gel and 15% separation gel.

Reconstitution

We recommend that this vial be briefly centrifuged prior to opening to bring the contents to the bottom. Please reconstitute protein in deionized sterile water to a concentration of 0.1-1.0 mg/mL. We recommend to add 5-50% of glycerol (final concentration) and aliquot for long-term storage at -20°C/-80°C. Our default final concentration of glycerol is 50%. Customers could use it as reference.

Shelf Life

The shelf life is related to many factors, storage state, buffer ingredients, storage temperature and the stability of the protein itself.

Generally, the shelf life of liquid form is 6 months at -20°C/-80°C. The shelf life of lyophilized form is 12 months at -20°C/-80°C.