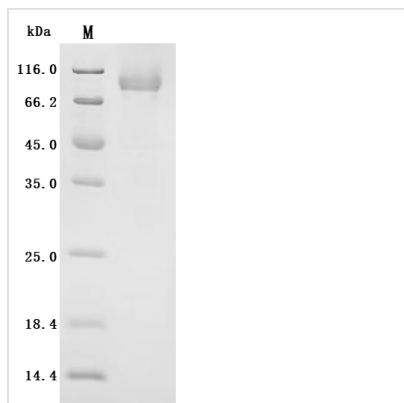




Recombinant Human Cadherin-20 (CDH20), Partial

Product Code	CSB-MP864022HU
Abbreviation	Recombinant Human CDH20 protein, partial
Storage	The shelf life is related to many factors, storage state, buffer ingredients, storage temperature and the stability of the protein itself. Generally, the shelf life of liquid form is 6 months at -20°C/-80°C. The shelf life of lyophilized form is 12 months at -20°C/-80°C.
Uniprot No.	Q9HBT6
Form	Lyophilized powder
Storage Buffer	Lyophilized from a 0.2 μm filtered PBS, 6% Trehalose, pH 7.4
Product Type	Recombinant Protein
Immunogen Species	Homo sapiens (Human)
Purity	Greater than 90% as determined by SDS-PAGE.
Sequence	<p> DTPTPQGELEALLSDKPQSHQRTKRSWVWNQFFVLEEYTGTDPLYVVGKLHSD MDRGDGSIKYILSGEGAGIVFTIDDTTGDIIHQRLDREERAQYTLRAQALDRRT GRPMEPESEFIIKIQDINDNEPKFLDGPYVATVPEMSPVGTSVIQTATDADDP TYGNSARVVYSILQQQPYFSVDSKTGVIRTALMNMMDREAKEYEYEVIIQAKDMG GQLGGLAGTTT VNITLSDVNDNPPRFPQKHQMSVLESAPISSTVGRVFAKDL DEGINAEMKYTIVDGDGADAFDISTDPNFQVGII TVKKPLSFESKKS YTLKVEGA NPHLEMRFLNLGPFQDTT TVHISVEDVDEPPVFEPGFYFVEVPEDVAIGTTIQII SAKDPDVTNNSIRYSIDRSSDPGRFFYVDITTGALMTARPLDREEF SWHNITVL AMEMNNPSQVGSVPVTIKVLDVNDNAPEFPRFYEAFCENAKAGQLIQTVSAV DQDDPRNGQH FYYS LAPEAANNPNFTIRDNDNTARILTRRS GFRQQEQSVF HLPILIADSGQPVLSSTGTLTIQVCSCDDDGHVMSCSPEAYMLPVSLSR </p>
Source	Mammalian cell
Target Names	CDH20
Expression Region	35-619aa
Notes	Repeated freezing and thawing is not recommended. Store working aliquots at 4°C for up to one week.
Tag Info	C-terminal 10xHis-tagged
Mol. Weight	66.3kDa
Protein Length	Partial
Image	



(Tris-Glycine gel) Discontinuous SDS-PAGE (reduced) with 5% enrichment gel and 15% separation gel.

Typical

Less than 1.0 EU/ug as determined by LAL method.

Reconstitution

We recommend that this vial be briefly centrifuged prior to opening to bring the contents to the bottom. Please reconstitute protein in deionized sterile water to a concentration of 0.1-1.0 mg/mL. We recommend to add 5-50% of glycerol (final concentration) and aliquot for long-term storage at -20°C/-80°C. Our default final concentration of glycerol is 50%. Customers could use it as reference.

Shelf Life

The shelf life is related to many factors, storage state, buffer ingredients, storage temperature and the stability of the protein itself. Generally, the shelf life of liquid form is 6 months at -20°C/-80°C. The shelf life of lyophilized form is 12 months at -20°C/-80°C.