



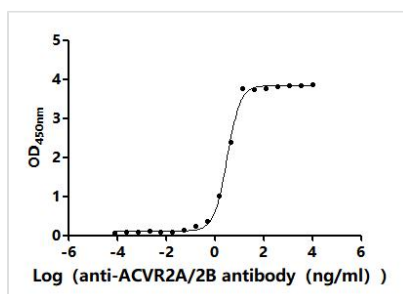
Recombinant Human/Cynomolgus monkey Activin receptor type-2B (ACVR2B), partial (Active)

Product Code	CSB-MP623829HU
Abbreviation	Recombinant Human/Cynomolgus monkey ACVR2B protein, partial (Active)
Storage	The shelf life is related to many factors, storage state, buffer ingredients, storage temperature and the stability of the protein itself. Generally, the shelf life of liquid form is 6 months at -20°C/-80°C. The shelf life of lyophilized form is 12 months at -20°C/-80°C.
Uniprot No.	Q13705/A0A2K5WUB0
Form	Lyophilized powder
Storage Buffer	Lyophilized from a 0.2 µm filtered PBS, 6% Trehalose, pH 7.4
Product Type	Recombinant Protein
Immunogen Species	Homo sapiens (Human)
Biological Activity	Measured by its binding ability in a functional ELISA. Immobilized Human ACVR2B at 2 µg/mL can bind Anti-ACVR2B recombinant antibody (CSB-RA623829MA1HU). The EC50 is 2.983-3.438 ng/mL.
Purity	Greater than 95% as determined by SDS-PAGE. Greater than 90% as determined by SEC-HPLC.
Sequence	SGRGEAETRECIYYNANWELERTNQSGLERCEGEQDKRLHCYASWRNSSGTI ELVKKGCWLDDFNCYDRQECVATEENPQVYFCCCEGNFCNERFTHLPEAGG PEVTYEPPPTAPTLLT
Source	Mammalian cell
Target Names	ACVR2B
Expression Region	19-137aa
Notes	Repeated freezing and thawing is not recommended. Store working aliquots at 4°C for up to one week.
Tag Info	C-terminal 10xHis-tagged
Mol. Weight	15.0 kDa
Protein Length	Partial

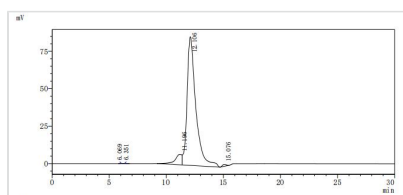
Image



(Tris-Glycine gel) Discontinuous SDS-PAGE (reduced) with 5% enrichment gel and 15% separation gel.



Activity
Measured by its binding ability in a functional ELISA. Immobilized Human ACVR2B at 2 μ g/ml can bind Anti-ACVR2A&ACVR2B recombinant antibody (CSB-RA623829MA1HU). The EC_{50} is 2.983-3.438 ng/mL.



The purity of ACVR2B was greater than 90% as determined by SEC-HPLC

Reconstitution

We recommend that this vial be briefly centrifuged prior to opening to bring the contents to the bottom. Please reconstitute protein in deionized sterile water to a concentration of 0.1-1.0 mg/mL. We recommend to add 5-50% of glycerol (final concentration) and aliquot for long-term storage at -20°C/-80°C. Our default final concentration of glycerol is 50%. Customers could use it as reference.

Shelf Life

The shelf life is related to many factors, storage state, buffer ingredients, storage temperature and the stability of the protein itself. Generally, the shelf life of liquid form is 6 months at -20°C/-80°C. The shelf life of lyophilized form is 12 months at -20°C/-80°C.