



# Recombinant Human Liver carboxylesterase 1 (CES1) (Active)

<b>Product Code</b>	CSB-MP005258HU
<b>Abbreviation</b>	Recombinant Human CES1 protein (Active)
<b>Storage</b>	The shelf life is related to many factors, storage state, buffer ingredients, storage temperature and the stability of the protein itself. Generally, the shelf life of liquid form is 6 months at -20°C/-80°C. The shelf life of lyophilized form is 12 months at -20°C/-80°C.
<b>Uniprot No.</b>	P23141
<b>Form</b>	Lyophilized powder
<b>Storage Buffer</b>	Lyophilized from a 0.2 µm sterile filtered 20 mM Tris-HCl, 0.5 M NaCl, 6%Trehalose, pH 8.0
<b>Product Type</b>	Recombinant Protein
<b>Immunogen Species</b>	Homo sapiens (Human)
<b>Biological Activity</b>	Measured by its ability to hydrolyze p-nitrophenylacetate. The specific activity is >40000 pmol/min/µg.
<b>Purity</b>	Greater than 95% as determined by SDS-PAGE. Greater than 95% as determined by SEC-HPLC.
<b>Sequence</b>	GHPSSPPVVDTVHGKVLGKFVSLEGFAQPVAIFLGIPFAKPPLGPLRFTPPQPA EPWSFVKNATSYPPMCTQDPKAGQLLSELF TNRKENIPLKLS EDCLYLNIYTPA DLTKKNR LPVMVWIHGGGLMVGAASTYDGLALAAHENVVVVTIQYRLGIW GFF STGDEHSRGNWGHLDQVAALRWVQDNIA SFGGNPGSVTIFGESAGGESVSV LVLSPLAKNLFHRAISESGVALTSVLVKKGDVKPLAEQIAITAGCKTTTSAVMVH CLRQKTEEELLETT LKMKFLSLDLQGD PRESQPLLGTVIDGM LLLKTPEELQAE RNFHTVPYMGINKQEF GWLIPMQLMSYPLSEGQLDQKTAMSLLWKS YPLVCI AKELIPEATEKYLGGTDDTVKKKDLFLDLIADVMFGVPSVIVARNHRDAGAPTY MYEFQYRPSFSSDMKPKTVIGDHGDELFSVFGAPFLKEGASEEEEIRLSKMVMK FWANFARNGNPNGEGLPHWPEYNQKEGYLQIGANTQAAQKLKDK EFAFWTN LFAKKAVEKPPQTEHIEL
<b>Source</b>	Mammalian cell
<b>Target Names</b>	CES1
<b>Expression Region</b>	18-567aa
<b>Notes</b>	Repeated freezing and thawing is not recommended. Store working aliquots at 4°C for up to one week.
<b>Tag Info</b>	C-terminal 10xHis-tagged
<b>Mol. Weight</b>	62.0 kDa
<b>Protein Length</b>	Full Length of Mature Protein



## Image

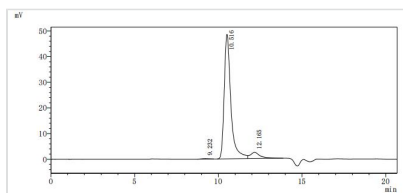


(Tris-Glycine gel) Discontinuous SDS-PAGE (reduced) with 5% enrichment gel and 15% separation gel.

<b>Enzyme</b>	Human CES1 (CSB-MP005258HU)	0.25µg/well
<b>Substrate</b>	4-NPA (sigma, N8130)	1mM
<b>Reaction system</b>	/	100µl
<b>Reaction conditions</b>	37°C and 5min in dark	/
<b>Buffer</b>	50 mM Tris, pH 7.5	/
<b>Enzyme activity</b>	>40000 pmol/min/µg	/

### Activity

Measured by its ability to hydrolyze p-nitrophenylacetate. The specific activity is >40000 pmol/min/µg.



The purity of CES1 was greater than 95% as determined by SEC-HPLC

## Endotoxin

Less than 1.0 EU/ug as determined by LAL method.

## Reconstitution

We recommend that this vial be briefly centrifuged prior to opening to bring the contents to the bottom. Please reconstitute protein in deionized sterile water to a concentration of 0.1-1.0 mg/mL. We recommend to add 5-50% of glycerol (final concentration) and aliquot for long-term storage at -20°C/-80°C. Our default final concentration of glycerol is 50%. Customers could use it as reference.

## Shelf Life

The shelf life is related to many factors, storage state, buffer ingredients, storage temperature and the stability of the protein itself.

Generally, the shelf life of liquid form is 6 months at -20°C/-80°C. The shelf life of lyophilized form is 12 months at -20°C/-80°C.