



Recombinant Human Sucrase-isomaltase, intestinal (SI), partial

Product Code	CSB-BP021285HU(A4)
Abbreviation	Recombinant Human SI protein, partial
Storage	The shelf life is related to many factors, storage state, buffer ingredients, storage temperature and the stability of the protein itself. Generally, the shelf life of liquid form is 6 months at -20°C/-80°C. The shelf life of lyophilized form is 12 months at -20°C/-80°C.
Uniprot No.	P14410
Form	Liquid or Lyophilized powder
Storage Buffer	If the delivery form is liquid, the default storage buffer is Tris/PBS-based buffer, 5%-50% glycerol. If the delivery form is lyophilized powder, the buffer before lyophilization is Tris/PBS-based buffer, 6% Trehalose, pH 8.0.
Immunogen Species	Homo sapiens (Human)
Sensitivity	Not Test
Purity	Greater than 85% as determined by SDS-PAGE.
Sequence	IKLPSDPISTLRVEVKYHKNDMLQFKIYDPQKKRYEVPVPLNIPTTPISTYEDRLY DVEIKENPFGIQIRRRSSGRVIWDSWLPGFANDQFIQISTRPSEYIYGFGGEVE HTAFKRDLNWNTWGMFTRDQPPGYKLSYGFHPYMALEEEGNAHGVLLN SNAMDVTFQPTPALTYRTVGGILDFYMFLGPTPEVATKQYHEVIGHPVMPAYW ALGFQLCRYGYANTSEVRELYDAMVAANIPYDVQYTDIDYMERQLDFTIGEAF QDLPQFVDKIRGEGMRYIIILDPAISGNETKTYPAFERGQQNDVFVKWPNTNDI CWAKVWPDLPNITDKLTLTEDEAVNASRAHVAFPDFRSTAEWWAREIVDFY NEKMKFDGLWIDMNEPSSFVNGTTNQCENDELNYPPYFPELTKRTDGLHFR TICMEAEQILSDGTSVLHYDVHNLVYGWSQMKPTHDALQKTTGKRGIVISRSTY PTSGRWGGHVLGDNYARWDNMDKSIIGMMEFSLFGMSYTGADICGFFNNS YHLCTRWMQLGAFYPYSRNHNIANTRQDPASWNETFAEMSRNILNIRYTLPL YFYTQMHEIHANGGTVIRPLLHEFFDEKPTWDIFKQFLWGP AFM VTPVLEPYV QTVNAYVPNARWFDYHTGKDIGVRGQFQTFNASYDTINLHVRGGHILPCQEP AQNTFYSRQKHMKLIVAADDNQMAQGSFLWDDGESIDTYERDLYLSVQFNLN QTTLTSTILKRGYINKSETRLGSLHVWVGKGTTPVNAVTLTYNGNKNLSLFPNEDT TNMILRIDLTTHNVTLEEPIEINWS
Research Area	Cancer
Source	Baculovirus
Target Names	SI
Protein Names	Recombinant Human Sucrase-isomaltase, intestinal (SI), partial
Expression Region	1008-1827aa
Notes	Repeated freezing and thawing is not recommended. Store working aliquots at 4°C for up to one week.

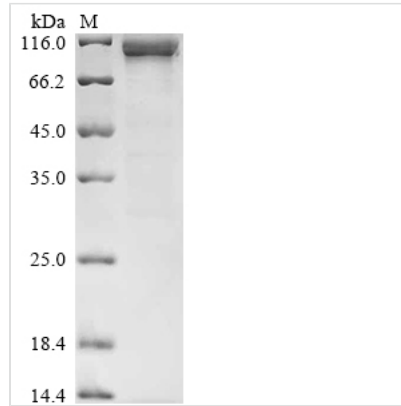


Tag Info C-terminal 6xHis-tagged

Mol. Weight 100.8 kDa

Protein Length Partial

Image



(Tris-Glycine gel) Discontinuous SDS-PAGE (reduced) with 5% enrichment gel and 15% separation gel.

Reconstitution

We recommend that this vial be briefly centrifuged prior to opening to bring the contents to the bottom. Please reconstitute protein in deionized sterile water to a concentration of 0.1-1.0 mg/mL. We recommend to add 5-50% of glycerol (final concentration) and aliquot for long-term storage at -20°C/-80°C. Our default final concentration of glycerol is 50%. Customers could use it as reference.

Shelf Life

The shelf life is related to many factors, storage state, buffer ingredients, storage temperature and the stability of the protein itself. Generally, the shelf life of liquid form is 6 months at -20°C/-80°C. The shelf life of lyophilized form is 12 months at -20°C/-80°C.