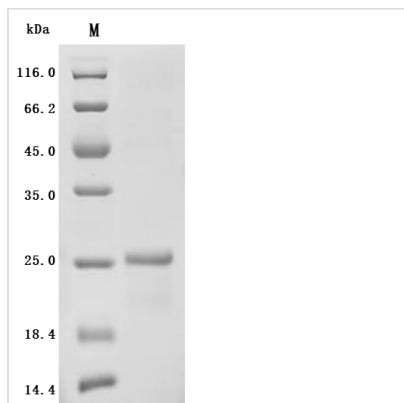


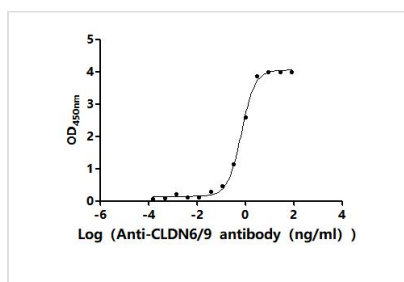


Recombinant Human Claudin-6(CLDN6)-Detergent (Active)

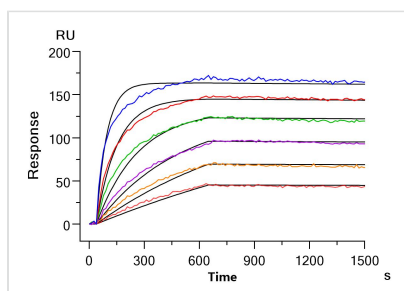
Product Code	CSB-MP005508HU(A5)-D
Storage	The shelf life is related to many factors, storage state, buffer ingredients, storage temperature and the stability of the protein itself. Generally, the shelf life of liquid form is 6 months at -20°C/-80°C. The shelf life of lyophilized form is 12 months at -20°C/-80°C.
Uniprot No.	P56747
Form	Liquid
Storage Buffer	50 mM HEPES, 0.15 M NaCl, 0.05% DDM, 0.01% CHS, pH7.5
Product Type	Recombinant Protein
Immunogen Species	Homo sapiens (Human)
Biological Activity	<p>①Measured by its binding ability in a functional ELISA. Immobilized Human CLDN6 at 2 µg/mL on a Nickel Coated plate can bind Anti-CLDN6/9 recombinant antibody (CSB-RA005508MA1HU). The EC50 is 0.6949-1.158 ng/mL.</p> <p>②Human CLDN6 Monoclonal Antibody (CSB-RA005508MA1HU) captured on Protein A Chip can bind Human CLDN6 Full Length Protein with an affinity constant of 5.43 nM as detected by MetaSPR Assay (in presence of DDM/CHS) (WeSPR™ 200).</p>
Sequence	ASAGMQILGVVLTLLGWVNGLVSCALPMWKVTAFIGNSIVVAQVVWEGLWMS CVVQSTGQMCKVYDSLALPQDLQAARALCVIALLVLFGLLVYLAGAKCTT CVEEKDSKARLVLTSGIVFVISGVLTLIPVCWTAHAIIRDFFYNPLVAEAQKRELG ASLYLGWAASGLLLLGGLLCCTCPSGGSQGPSHYMARYSTSAPAIRGPSE YPTKNYV
Source	Mammalian cell
Target Names	CLDN6
Expression Region	2-220aa
Notes	Repeated freezing and thawing is not recommended. Store working aliquots at 4°C for up to one week.
Tag Info	N-terminal 10xHis-tagged and C-terminal Twin-Strep-tagged
Mol. Weight	27.7 kDa
Protein Length	Partial
Image	



(Tris-Glycine gel) Discontinuous SDS-PAGE (reduced) with 5% enrichment gel and 15% separation gel.



Activity
Measured by its binding ability in a functional ELISA. Immobilized Human CLDN6 at 2 µg/ml on an Nickel Coated plate can bind Anti-CLDN6/9 recombinant antibody (CSB-RA005508MA1HU). The EC₅₀ is 0.6949-1.158 ng/mL.



Activity
Human CLDN6 Monoclonal Antibody (CSB-RA005508MA1HU) captured on Protein A Chip can bind Human CLDN6 Full Length Protein with an affinity constant of 5.43 nM as detected by MetaSPR Assay (in presence of DDM/CHS) (WeSPR™ 200).

Reconstitution

We recommend that this vial be briefly centrifuged prior to opening to bring the contents to the bottom. Please reconstitute protein in deionized sterile water to a concentration of 0.1-1.0 mg/mL. We recommend to add 5-50% of glycerol (final concentration) and aliquot for long-term storage at -20°C/-80°C. Our default final concentration of glycerol is 50%. Customers could use it as reference.

Shelf Life

The shelf life is related to many factors, storage state, buffer ingredients, storage temperature and the stability of the protein itself. Generally, the shelf life of liquid form is 6 months at -20°C/-80°C. The shelf life of lyophilized form is 12 months at -20°C/-80°C.