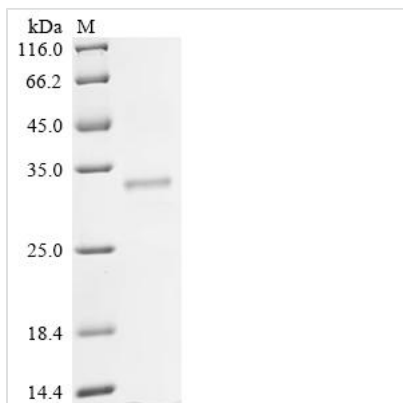




Recombinant Human Protein mono-ADP-ribosyltransferase PARP16 (PARP16), partial

Product Code	CSB-YP836673HU
Abbreviation	Recombinant Human PARP16 protein, partial
Storage	The shelf life is related to many factors, storage state, buffer ingredients, storage temperature and the stability of the protein itself. Generally, the shelf life of liquid form is 6 months at -20°C/-80°C. The shelf life of lyophilized form is 12 months at -20°C/-80°C.
Uniprot No.	Q8N5Y8
Form	Liquid or Lyophilized powder
Storage Buffer	If the delivery form is liquid, the default storage buffer is Tris/PBS-based buffer, 5%-50% glycerol. If the delivery form is lyophilized powder, the buffer before lyophilization is Tris/PBS-based buffer, 6% Trehalose, pH 8.0.
Immunogen Species	Homo sapiens (Human)
Sensitivity	Not Test
Purity	≥ 95% as determined by SDS-PAGE.
Sequence	<p>MQPSGWAAAREAAGRDM LAADLRCSL FASALQSYKRDSVLRPF PASYARGD CKDFEALLADASKLPNLKELLQSSGDNHKRAWDLVSWILSSKVLTIHSAGKAEF EKIQKLTGAPHTPVPAPDFLFEIEYFDPANAKFYETKGERDLIYAFHGSRLNFH SIIHNLHCHLNKTSLFGEGTYLTSDL SLALIYSPHGHGWQH SLLGPILSCVAVC EVIDHPDVKCQTKKKDSKEIDRRRARIKHSEGGDIPPKYFVVTNNQLLRVKYLL VYSQKPPKRASSQLSWFS</p>
Research Area	Epigenetics and Nuclear Signaling
Source	Yeast
Target Names	PARP16
Expression Region	1-287aa
Notes	Repeated freezing and thawing is not recommended. Store working aliquots at 4°C for up to one week.
Tag Info	C-terminal 6xHis-tagged
Mol. Weight	33.7 kDa
Protein Length	Partial
Image	



(Tris-Glycine gel) Discontinuous SDS-PAGE (reduced) with 5% enrichment gel and 15% separation gel.

Reconstitution

We recommend that this vial be briefly centrifuged prior to opening to bring the contents to the bottom. Please reconstitute protein in deionized sterile water to a concentration of 0.1-1.0 mg/mL. We recommend to add 5-50% of glycerol (final concentration) and aliquot for long-term storage at -20°C/-80°C. Our default final concentration of glycerol is 50%. Customers could use it as reference.

Shelf Life

The shelf life is related to many factors, storage state, buffer ingredients, storage temperature and the stability of the protein itself. Generally, the shelf life of liquid form is 6 months at -20°C/-80°C. The shelf life of lyophilized form is 12 months at -20°C/-80°C.