



Recombinant Human Vascular endothelial growth factor receptor 2 (KDR), partial (Active)

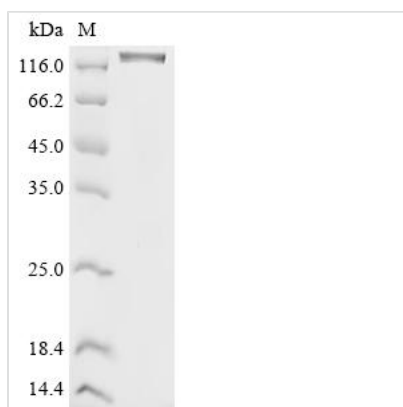
Product Code	CSB-MP012145HU
Abbreviation	Recombinant Human KDR protein, partial (Active)
Storage	The shelf life is related to many factors, storage state, buffer ingredients, storage temperature and the stability of the protein itself. Generally, the shelf life of liquid form is 6 months at -20°C/-80°C. The shelf life of lyophilized form is 12 months at -20°C/-80°C.
Uniprot No.	P35968
Form	Lyophilized powder
Storage Buffer	Lyophilized from a 0.2 µm sterile filtered PBS, 6% Trehalose, pH 7.4
Product Type	Recombinant Protein
Immunogen Species	Homo sapiens (Human)
Biological Activity	Measured by its binding ability in a functional ELISA. Immobilized Human VEGFA(CSB-MP025833HU(F4)) at 2 µg/mL can bind Human KDR. The EC50 is 11.19-12.63 ng/mL.
Purity	≥ 95% as determined by SDS-PAGE. ≥ 90% as determined by SEC-HPLC.
Sequence	ASVGLPSVSLDLPRLSIQKDILTIKANTTLQITCRGQRDLDWLWPNNQSGSEQR VEVTECSDGLFCKTLTIPKVIGNDTGAYKCFYRETDLASVIYVYVQDYRSPFIAS VSDQHGVVYITENKNKTVVIPCLGSISNLNVSLCARYPEKRFVDPGNRISWDSK KGFTIPSYMISYAGMVFCEAKINDESYQSIMYIVVVVGYRIYDVVLSPSHGIELS VGEKLVLNCTARTELVGIDFNWEYPSSKHQHKLVNRDLKTQSGSEMKKFL STLTIDGVTRSDQGLYTCAASSGLMTKKNSTFVRVHEKPFVAFGSGMESLVEA TVGERVRIPAKYLGYPPEIKWYKNGIPLESNHTIKAGHVLTIMEVSRDTGNY TVILTNPISKEKQSHVVSLVVYVPPQIGEKSLISPVDSYQYGTQTTLTCTVYAIPP PHHHWYWQLEEECANEPSQAVSVTNPYPCEEWRSVEDFQGGNKIEVNKNQ FALIEGKNKTVSTLVIQAANVSALYKCEAVNKVGRGERVISFHVTRGPEITLQPD MQPTEQESVSLWCTADRSTFENLTWYKLGQPPLPIHV GELPTPVCKNLDTLW KLNATMFSNSTNDILIMELKNASLQDQGDYVCLAQDRKTKKRHCVVRQLTVLE RVAPTITGNLENQTTSIGESIEVSTASGNPPPQIMWFKDNETLVEDSGIVLKD GNRNLTI RVRKEDEGLYTCQACSVLGC AKVEAFFIIEGAQEKTNLE
Source	Mammalian cell
Target Names	KDR
Expression Region	20-764aa
Notes	Repeated freezing and thawing is not recommended. Store working aliquots at 4°C for up to one week.
Tag Info	C-terminal hFc1-tagged



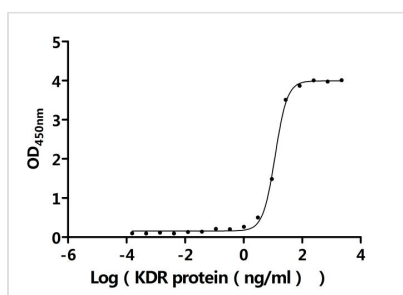
Mol. Weight 112.2 kDa

Protein Length Partial

Image

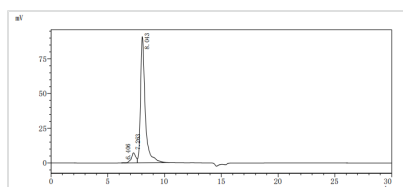


(Tris-Glycine gel) Discontinuous SDS-PAGE (reduced) with 5% enrichment gel and 15% separation gel.



Activity

Measured by its binding ability in a functional ELISA. Immobilized Human VEGFA(CSB-MP025833HU(F4)) at 2 μ g/ml can bind Human KDR. The EC_{50} is 11.19-12.63 ng/mL.



The purity of KDR was greater than 90% as determined by SEC-HPLC

Endotoxin Less than 1.0 EU/ μ g as determined by LAL method.

Reconstitution We recommend that this vial be briefly centrifuged prior to opening to bring the contents to the bottom. Please reconstitute protein in deionized sterile water to a concentration of 0.1-1.0 mg/mL. We recommend to add 5-50% of glycerol (final concentration) and aliquot for long-term storage at -20°C/-80°C. Our default final concentration of glycerol is 50%. Customers could use it as reference.

Shelf Life The shelf life is related to many factors, storage state, buffer ingredients, storage temperature and the stability of the protein itself. Generally, the shelf life of liquid form is 6 months at -20°C/-80°C. The shelf life of lyophilized form is 12 months at -20°C/-80°C.